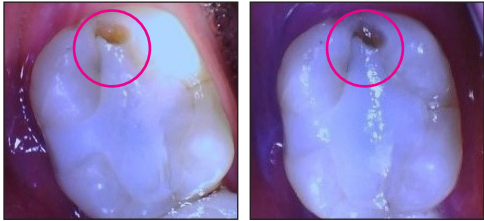


SDF DOES NOT TURN TEETH BLACK

Some believe that SDF “turns the tooth black”.
IT DOES NOT!



BEFORE

AFTER



BEFORE

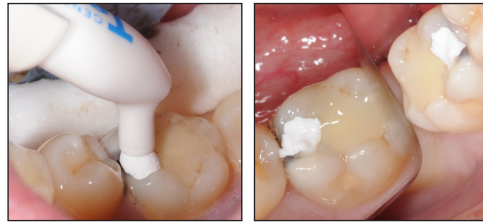
AFTER

In most cases the infected lesion is already dark. The silver precipitate of SDF penetrates dentinal tubules, eliminating sensitivity. Once the tooth is restored, the discoloration is gone.

TEMPIT® TEMPORARY FILLING MATERIAL

If concerned with discoloration of a lesion, **Tempit** is a fast and easy way to mask any discoloration until you are ready to restore the lesion.

This moisture-activated material is easy to remove when it is time to place a restoration.



APPLY TEMPIT

AFTER APPLICATION

- Apply Tempit to fill/cover the lesion
- Wait 5 minutes to set (moisture activated)
- To remove, use hand or ultrasonic scaler

THE ADA RECOMMENDS FLUORIDE VARNISH FOR HIGH-RISK PATIENTS



Patients receiving **SilverSense SDF** treatment are high-risk and will benefit from a fluoride varnish application on all teeth.*

FluoroDose® is an award-winning varnish that provides maximum benefit. Additionally, the great taste of FluoroDose will mask the metallic taste of SDF.

*[https://jada.ada.org/article/S0002-8177\(14\)60659-0/fulltext](https://jada.ada.org/article/S0002-8177(14)60659-0/fulltext)
https://www.aapd.org/media/Policies_Guidelines/R_ChairsideGuide.pdf.

© 2023 Centrix, Inc. | 013796 REV A

centrix
MAKING DENTISTRY EASIER®

SilverSense SDF™
38% Silver Diamine Fluoride

**QUICK-START
GUIDE**



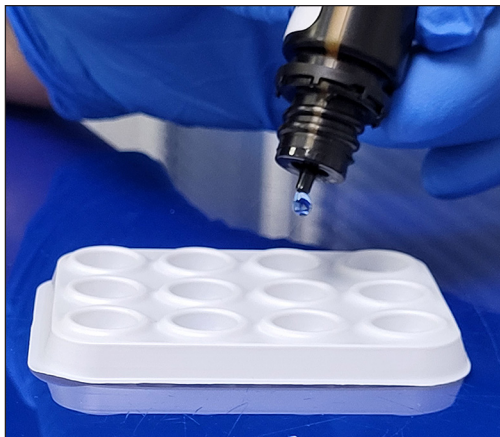
FOR MORE SDF CLINICAL CASES VISIT OUR DEDICATED WEB PAGE: CENTRIXDENTAL.COM/SDF-CLINICAL



STEP 1:

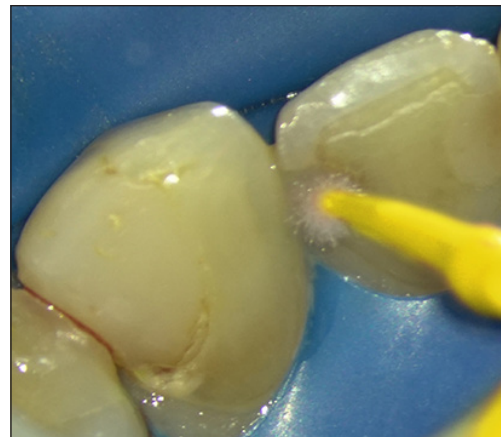
Ensure the tooth is clean and dry, as food debris and excess saliva will prevent effective absorption of the solution.

- Isolate the tooth (rubber dam or cotton roll)
- Remove excess plaque
- Dry the affected area with a cotton pellet



STEP 2:

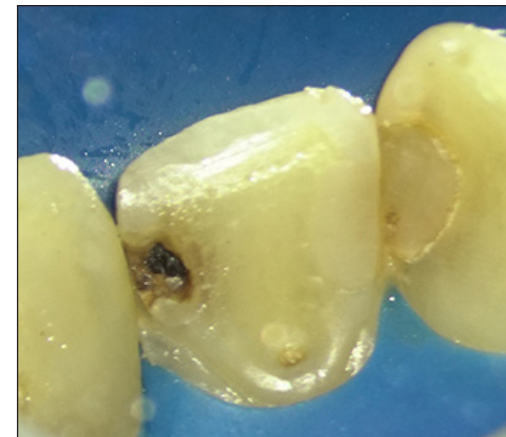
Place 1–2 drops of **SilverSense SDF™** into a disposable dappen dish.



STEP 3:

Apply **SilverSense SDF** directly to the affected tooth surface with the included **Benda® Micro Applicator**. Reapply until lesion stays wet.

For approximal surfaces, apply to embrasures. **SilverSense SDF** will wick into the lesion.



STEP 4:

Allow to air dry for 60 seconds. **Do not rinse.** Remove excess **SilverSense SDF** with cotton.