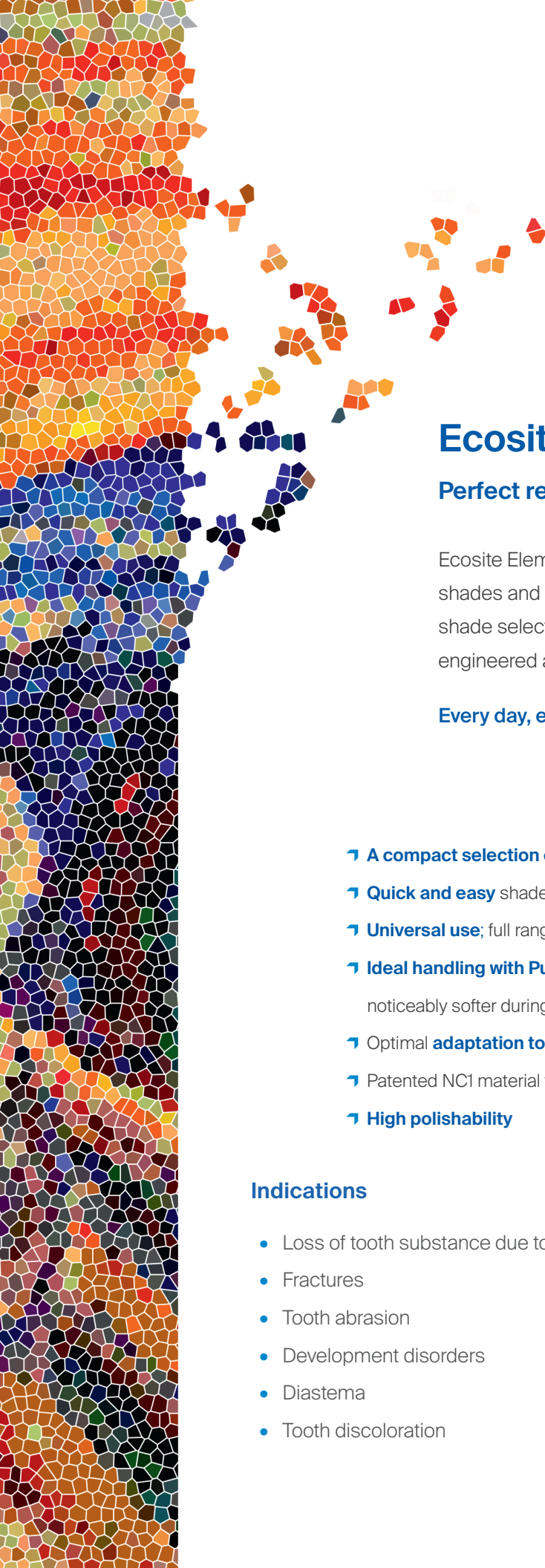


The modern art of
composite

Ecosite Elements

 **New!**

 **DMG**



Ecosite Elements

Perfect results and amazing simplicity, every time

Ecosite Elements is a universal nanohybrid composite with a compact range of shades and opacities. The innovative NC1 material technology with intelligent shade selection and exceptional handling is intuitive, esthetic, precisely engineered and reliably efficient for superb anterior and posterior results.

Every day, every shade, every treatment.

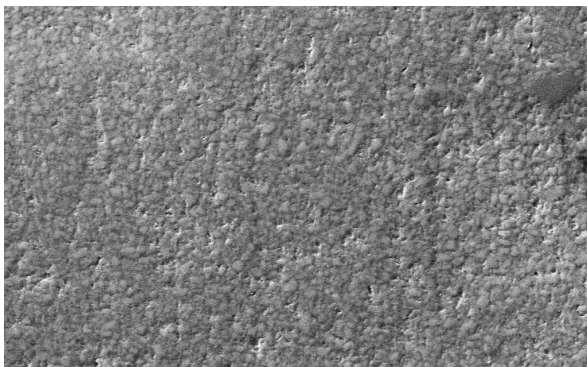
- ↗ **A compact selection of shades that covers the full VITA range**
- ↗ **Quick and easy** shade matching
- ↗ **Universal use**; full range of anterior and posterior indications
- ↗ **Ideal handling with Push-and-Flow effect**: Initially firm, the material quickly becomes noticeably softer during sculpting
- ↗ Optimal **adaptation to cavity walls**; eliminates bubbles and cracks
- ↗ Patented NC1 material technology for **homogeneous distribution of particles**
- ↗ **High polishability**

Indications

- Loss of tooth substance due to caries
- Fractures
- Tooth abrasion
- Development disorders
- Diastema
- Tooth discoloration
- Slight misalignment of the anterior teeth
- Primary and secondary prevention of caries
- Dental or periodontal diseases (i.e. trauma or periodontitis that require the splinting of the affected teeth)
- Esthetically demanding cases

Exceptional handling thanks to NC1 technology.

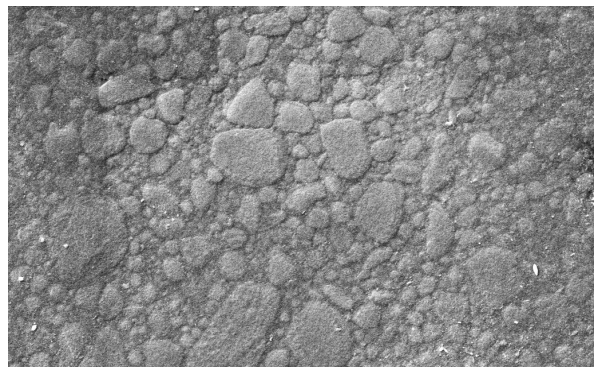
Ecosite Elements features DMG-patented NC1 technology (non-clustering). The result? Its fully state-of-the-art mechanical values are perfectly suited for the anterior and posterior regions.



Ecosite Elements
2000x magnification

Source: Internal images, DMG, 2018

Thanks to the precise silanization of the individual filler particles, NC1 technology enables a homogeneous distribution and ensures an optimal working quality, maximum polishability and stunning results.



Filtek Supreme XTE (3M ESPE)
2000x magnification

Push-and-Flow effect for reliable adaptation.

The Push-and-Flow effect ensures that the material adapts to the respective requirements depending on the situation. **Firm at the outset, it quickly becomes noticeably softer during sculpting**, which enables optimal adaptation to

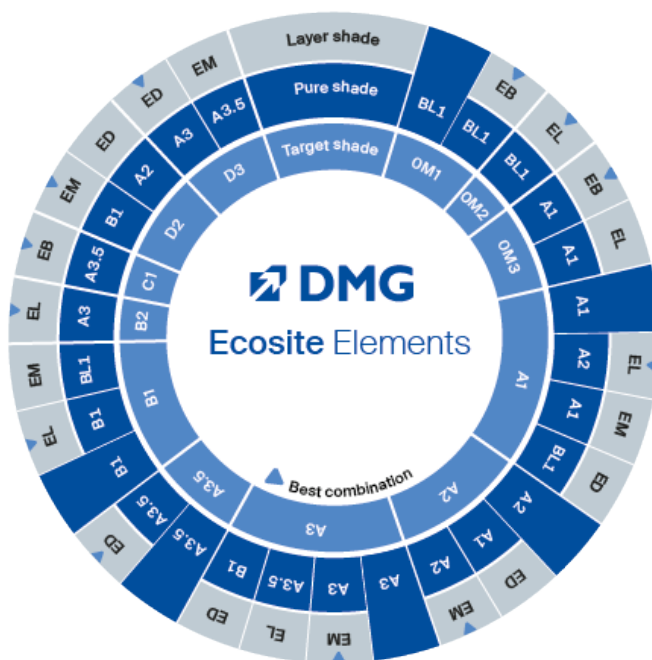
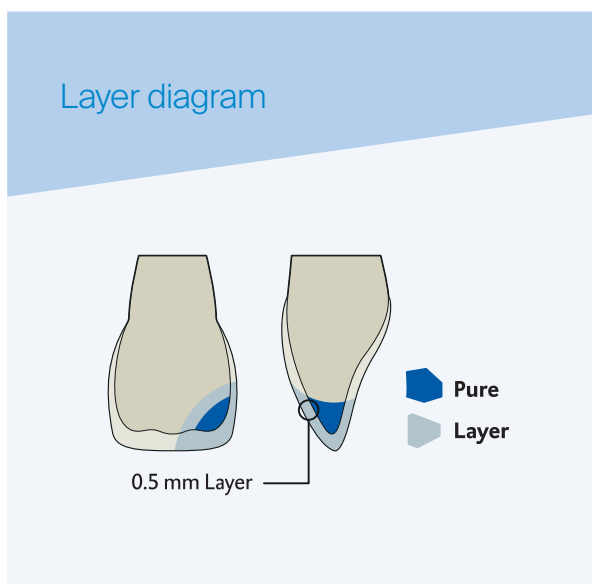
the cavity walls and the precise reproduction of anatomical features. It also helps avoid bubbles and cracks in the critical contact surfaces between the individual composite layers.

Maximum variety of combinations.

Every shade. Every technique.

The combination options offered by Ecosite Elements intelligent shade system and its ultra high-quality composition allows for treatment across all indications. Whether a simple posterior filling using the Pure shades, or an anterior restoration

that requires a high level of detail, monochromatic or layering technique—Ecosite Elements always provides an impressive, quick, high-gloss polish and an amazing chameleon effect.



Pure & Layer Modules

Pure shades are used to help achieve a natural-looking dentin or enamel replacement, and Layer shades are used as an enamel replacement or for layering in combination with Pure shades.

The compact selection of highly viscous, radiopaque composites include 5 VITA shades (A1, A2, A3, A3.5, B1), 1 bleach shade (BL1) and 4 enamel shades (EB, EL, EM, ED) in different opacities.

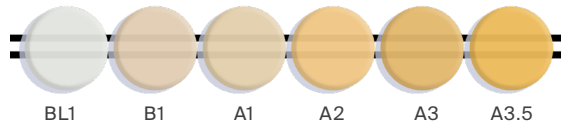
Highlight Module

The OA2 and INC shades are radiopaque composites with optimum flow composites that are suitable for fissure sealing. OA2 is also used for veneering of slightly discolored areas and for creating ultimate tooth opacity, whereas INC has a high transparency, making it ideal for esthetic incisal edge design.

The White (W) and Brown (B) shades are flowable composites for the customizing restorations: W is used for the reproduction of white spots and as an opaque covering layer, and B is used for the replication of brown spots.

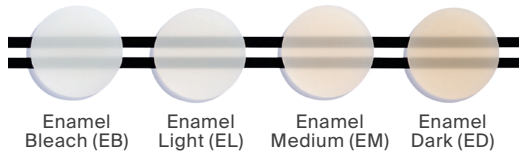
The intelligent shade system with proven precision.

Pure Shades



- 5 VITA shades + 1 Bleach shade in one opacity
- Highly viscous
- Highly radiopaque
- Monochromatic: dentin or enamel replacement
- Layering technique: enamel replacement
- Chameleon effect

Layer Shades



- 4 enamel shades in 2 opacities
- Highly viscous
- Highly radiopaque
- Enamel replacement (monochromatic or layering technique)

Highlight Shades



- 4 colors in 4 opacities
- Flowable consistency
- Masking of discolored areas
- Reproduction of white and brown spots and the replication of brown spots
- Esthetic incisal edge design
- Fissure sealing

Ecosite Elements: Simply expert results.

Ecosite Elements impresses
with perfect results in all areas of
application. Fast, flexible, efficient.

Before



Dr. Ali Salehi, France, teeth 46 + 47.

After



Result with Pure A3.



Dr. Abdi Sameni, U.S.A., teeth 8 + 9



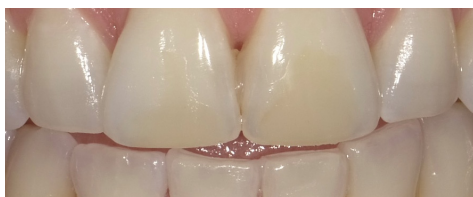
Result with Layer Enamel Bleach + Highlight White.



Dr. Erik-Jan Muts, Netherlands, teeth 36 + 37.



Result with Pure A3.5 + Layer Enamel Medium + Highlight Brown.



Dr. Sarah Winter, U.S.A., teeth 8 + 9.



Result with Layer Enamel Bleach.

Product & Contents

Ecosite Elements Pure Refills

Syringe, 1 @ 4g ea:

Shade BL1 - 222840
Shade B1 - 222807
Shade A1 - 222841
Shade A2 - 222808
Shade A3 - 222809
Shade A3.5 - 222810

Safetips, 16 @ 0.25g ea:

Shade BL1 - 222850
Shade B1 - 222820
Shade A1 - 222851
Shade A2 - 222821
Shade A3 - 222822
Shade A3.5 - 222823

Ecosite Elements LAYER Refills

Syringe, 1 @ 4g ea:

Shade EB (Enamel Bleach) - 222812
Shade EL (Enamel Light) - 222813
Shade EM (Enamel Medium) - 222814
Shade ED (Enamel Dark) - 222815

Safetips, 16 @ 0.25g ea:

Shade EB (Enamel Bleach) - 222825
Shade EL (Enamel Light) - 222826
Shade EM (Enamel Medium) - 222827
Shade ED (Enamel Dark) - 222828

Ecosite Elements HIGHLIGHT Refills

Syringe, 1 @ 2g ea:

Shade INC (Incisal) - 222816
Shade OA2 (Opaque A2) - 222817
Shade W (White) - 222818
Shade B (Brown) - 222819



DMG America, LLC: 65 Challenger Road, Suite 340, Ridgefield Park, NJ 07660
tel: 800.662.6383 | email: info@dmg-america.com | web: www.dmg-america.com

