



ULTRASONIC SCALING

SWERV ³ Magnetostrictive Scaler	C1
Ultrasonic Inserts	C3
Piezon [®] Units	C13
Hu-Friedy EMS Tips	C17
S-Series Tips	C20
AIR-FLOW [®] Units	C27
AIR-FLOW [®] Powders	C34





ULTRASONIC SET-UPS

ULTRASONIC SCALING INSERT SET-UP

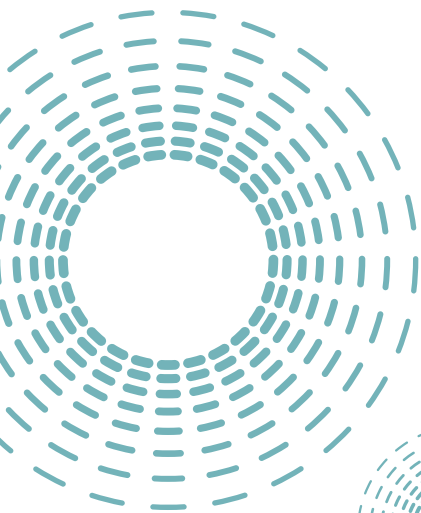
DESCRIPTION	SUGGESTION
Cassette	IM510x*
Mirror/Handle	MIR5/3, MH6
Explorer	EXD2A
Probe	PCP12/11.5
Ultrasonic Inserts	UI30SS10, UI25SS10 UI30SS100, UI25SS100
Sickle Scalars	SH6/79, S204S9
Universal Curettes	SC13/149, SC4R/4L

ULTRASONIC POWER SCALING INSERT SUPPLEMENTARY

DESCRIPTION	SUGGESTION
Cassette	IM30HUx*
Ultrasonic Inserts	UI30SS10, UI25SS10 UI30SS100, UI25SS100

PERIODONTAL DEBRIDEMENT SET-UP

DESCRIPTION	SUGGESTION
Cassette	IM416x*
Mirror/Handle	MIR4/3, MH6
Explorers	EXD11/12AF, EXTU17/23
Probe	PCPUNC15
Ultrasonic Inserts	UI30SS10, UI25SS10 UI30SS100, UI25SS100
Sickle Scalars	SH6/79, S204SD
Curettes	SRPG15/169, SG17/189
Dressing Pliers	DP2
Sharpening Stones	SS3C, SS299



* See Section A for exact product code number for cassette color desired.



SWERV³® MAGNETOSTRICTIVE SCALER

The SWERV³ magnetostrictive power scaler combines power and handling in a unique ergonomic design that ensures the comfort of dental professionals, and their patients. It integrates finely tuned electronics that improve control and scaling efficiency in all clinical indications, allowing dental professionals to provide optimal care for every patient, every day.

SWERV³ Series – 30K

| UM3-30

SWERV³ Series – 25K

| UM3-25



POINTS OF PERFORMANCE

- Finely tuned electronics provide superior patient and clinician comfort
- Switching power settings is effortless with the color-coded dual power modes
- The smooth surface makes disinfection simple and effective
- The color-coded, lighted display is easy to identify and adjust with the touch of a button
- The auto-purge function helps remove air from waterlines, saving the clinician time between patients

Each SWERV³ unit comes with one Swivel Direct Flow #10 Universal Insert (UI30SD10 or UI25SD10).
(Subject to change.)

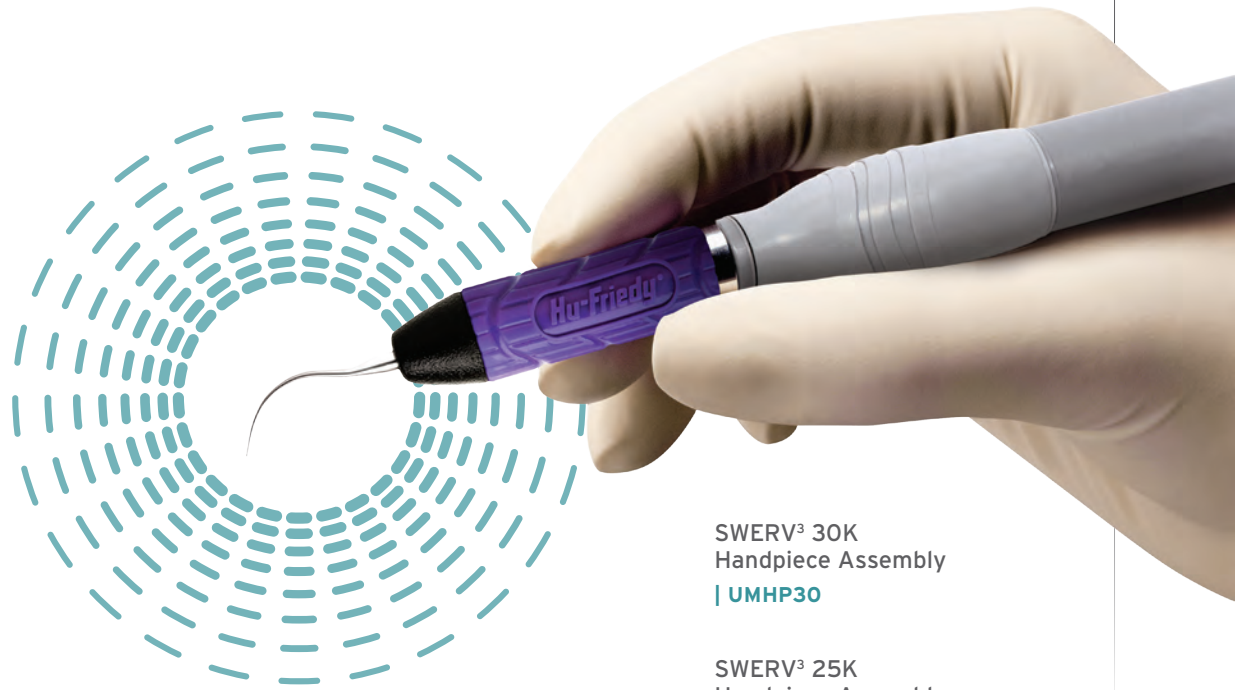


SWERV³ MAGNETOSTRICTIVE

Experience superior clinician comfort with our ergonomic, lightweight handpiece.

SWERV³ HANDPIECE

- A lightweight, well-balanced design reduces clinician fatigue.
- Large diameter handpiece reduces finger pinching for increased clinical comfort.
- Enables use of a relaxed grasp that eliminates undesired pressure points.
- Reduces drag and minimizes strain on clinicians' hands.



SWERV³ 30K
Handpiece Assembly
| [UMHP30](#)

SWERV³ 25K
Handpiece Assembly
| [UMHP25](#)

REPLACEMENT PART CODES

SWERV ³ Barrier Sleeves	UMBS
SWERV ³ Foot Control, On-Off	UMFC
SWERV ³ Handpiece User Manual	UMMANUALHP
SWERV ³ Instructional CD	HF-129CD
SWERV ³ Power Cord US	UMCORD-US
SWERV ³ User Manual	UMMANUAL3
SWERV ³ Water Filters, 10-pack	UMWF
SWERV ³ Water Supply Connector	UMWSC
SWERV ³ Water Supply Set	UMWSS



ULTRASONIC INSERTS

MAGNETOSTRICTIVE INSERTS DESIGNS

(All Shown in 30 kHz size.)



SWIVEL DIRECT FLOW® INSERTS



SWIVEL™ INSERTS



STREAMLINE DIRECT FLOW™ INSERTS



STREAMLINE® INSERTS



ORIGINAL PROPHY PLUS™ AND AFTER FIVE PLUS INSERTS



ORIGINAL PROPHY AND AFTER FIVE® INSERTS

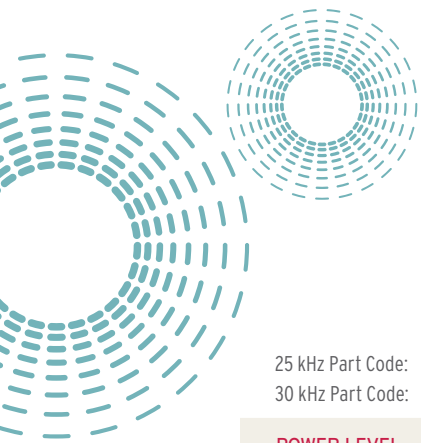


ULTRASONIC INSERTS

SWIVEL DIRECT FLOW INSERTS



The Swivel Direct Flow inserts with a gray cone have all of the features of the revolutionary Swivel inserts plus a through-tip water delivery. This design focuses the water flow directly to the tip, reducing excess spray and increasing visibility.



25 kHz Part Code:
30 kHz Part Code:

#10 Universal
| UI25SD10
| UI30SD10

#100 Thin
| UI25SD100
| UI30SD100

#1000 Triple Bend
| UI25SD1000
| UI30SD1000

XT Triple Bend
| UI30SDXTTB

POWER LEVEL

LOW—HIGH

LOW—MEDIUM

LOW—HIGH

LOW—MEDIUM

- Light to heavy deposits
- Orthodontic cement

- Light to moderate deposits even in periodontal pockets

- Light to heavy deposits
- Beveled edges for tenacious and heavy deposits
- Orthodontic cement

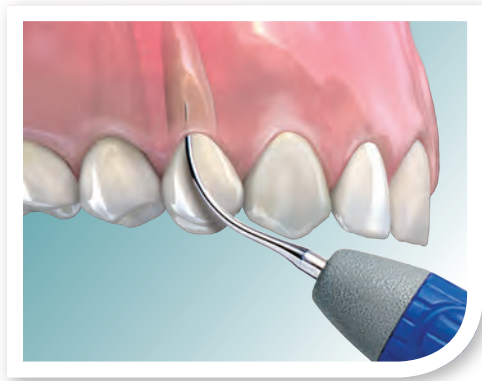
- Light to moderate deposits even in periodontal pockets
- Beveled edges for efficient calculus removal
- 24% thinner than #1000 Triple Bend for easier access

Hu-Friedy ultrasonic inserts are compatible with SWERV³ and all Cavitron[®] style magnetostrictive ultrasonic scalars.

*Cavitron is a registered trademark of Dentsply International Corporation.



SWIVEL DIRECT FLOW AFTER FIVE INSERTS



Ideal for:

- Light to moderate deposits even in periodontal pockets
- Furcation areas
- Developmental concavities



Set of Three

25 kHz Part Code:

| UI25SDSET

30 kHz Part Code:

| UI30SDSET

POWER LEVEL

LOW—MEDIUM



Left

| UI25SDL

| UI30SDL

Straight

| UI25SDS

| UI30SDS

Right

| UI25SDR

| UI30SDR

25 kHz Part Code:

30 kHz Part Code:

POWER LEVEL

LOW—MEDIUM

LOW—MEDIUM

LOW—MEDIUM



ULTRASONIC INSERTS

SWIVEL INSERTS

In the Swivel inserts with a black cone, water flows from the base allowing thorough irrigation and lavage.



#10 Universal

| UI25SS10
| UI30SS10

#100 Thin

| UI25SS100
| UI30SS100

#1000 Triple Bend

| UI25SS1000
| UI30SS1000

Swivel XT

| UI25SSXT
| UI30SSXT

25 kHz Part Code:

30 kHz Part Code:

POWER LEVEL

LOW—HIGH

LOW—MEDIUM

LOW—MEDIUM

25 kHz: LOW

30 kHz: LOW—MEDIUM

- Light to heavy deposits
- Tenacious deposits
- Orthodontic cement

- Light to moderate deposits even in periodontal pockets

- Light to heavy deposits
- Beveled edges for tenacious and heavy deposits
- Orthodontic cement

- Tenacious deposits
- Furcation areas

EXPERIENCE FREEDOM AT YOUR FINGERTIPS!

The maneuverability and adaptability you want in ultrasonic scaling, with the exclusive Swivel inserts. With a slight rolling motion of your fingertips, rotate the insert 360° to eliminate the old “start, stop, remove, and readjust” routine required with traditional inserts. Swivel inserts also reduce the torque from the handpiece cord, increasing overall balance for hassle-free scaling.

With an 18% larger grip,* finger pinching is reduced, resulting in less hand fatigue** and enhance tactile sensitivity. The lightly textured silicone grips provide a secure, comfortable grasp and are color-coded for easy tip identification.

360° SWIVEL TECHNOLOGY



Swivel XT is thin enough to provide access into hard-to-reach areas, yet strong enough to effectively remove tenacious deposits even when used on low to medium power.

* Compared to Hu-Friedy Streamline Inserts.

** Source: Gerwatoski, L.J., McFall, D.B., Stach, D.: Carpal Tunnel Syndrome: Risk Factors and Preventive Strategies for the Dental Hygienist. Journal of Dental Hygiene, February 1992.

New Streamline Direct Flow inserts from Hu-Friedy offer a targeted water flow, ergonomic handling and efficient scaling at a great price!

ULTRASONIC INSERTS



STREAMLINE DIRECT FLOW INSERTS

- A comfortable, wide diameter handle reduces finger pinching to ensure clinician comfort
- Through-tip water delivery reduces excess spray and increases visibility of the treatment site
- The special stainless steel alloy used in the tip ensures that you achieve the highest level of efficient scaling – exactly what you’ve come to expect from Hu-Friedy



#10 Universal UI25SF10 UI30SF10	#100 Thin UI25SF100 UI30SF100	#1000 Triple Bend UI25SF1000 UI30SF1000	Streamline XT UI30SFXT	XT Triple Bend UI30SFXTTB
--	--	--	------------------------------------	---------------------------------------

25kHz Part Code:
30kHz Part Code:

POWER LEVEL

LOW—HIGH	LOW—MED	LOW-HIGH	LOW—MED	LOW-MEDIUM
<ul style="list-style-type: none"> • Light to heavy deposits • Orthodontic cement 	<ul style="list-style-type: none"> • Light to moderate deposits even in periodontal pockets 	<ul style="list-style-type: none"> • Light to heavy deposits • Beveled edges for tenacious and heavy deposits • Orthodontic cement 	<ul style="list-style-type: none"> • Tenacious deposits • Furcation areas 	<ul style="list-style-type: none"> • Light to moderate deposits even in periodontal pockets • Beveled edges for efficient calculus removal • 24% thinner than #1000 Triple Bend for easier access

AFTER FIVE STREAMLINE DIRECT FLOW INSERTS

Good for:

- Light to moderate deposits even in periodontal pockets
- Furcation areas
- Developmental concavities



Left UI25SFL UI30SFL	Straight UI25SFS UI30SFS	Right UI25SFR UI30SFR	Set of Three UI25SFSET UI30SFSET
---------------------------------------	---	--	---

25kHz Part Code:
30kHz Part Code:

POWER LEVEL

LOW—MED	LOW—MED	LOW—MED	LOW—MED
---------	---------	---------	---------



ULTRASONIC INSERTS

STREAMLINE INSERTS

- Routine scaling is more efficient with our Streamline inserts.
- Inserts have internal water flow delivery – water comes directly from the base
- The color-coded resin handles help in instantly identifying the tip style

25 kHz Part Code:
30 kHz Part Code:



#10 Universal
| UI1025K
| UI1030K



#100 Thin
| UI25K100S
| UI30K100S



#3 Beavertail
| UI325K
| UI330K



#1000 Triple Bend
| UI100025K
| UI100030K

POWER LEVEL

LOW – HIGH

LOW – MEDIUM

MEDIUM – HIGH

LOW – HIGH

- Light to heavy and tenacious deposits
- Orthodontic cement

- Light to moderate deposits even in periodontal pockets

- Heavy deposits
- Orthodontic cement

- Light to heavy deposits
- Beveled edges for tenacious and heavy deposits
- Orthodontic cement

AFTER FIVE PLUS INSERTS

Reach deep into pockets and achieve efficient subgingival scaling with these thin tips, exclusively from Hu-Friedy. Probe-size tips (same tip design as the After Five inserts) offer smooth, deep access into periodontal pockets. A fixed water tube provides hassle-free water delivery. Patient comfort is maximized since designs are efficient at low power settings. Our resin handle is lightweight and color-coded for instant tip identification, increased tactile sensitivity, and reduced operator fatigue. Tips are also available in our Swivel and Streamline Direct Flow series.

Ideal for:

- Light to moderate deposits even in periodontal pockets
- Furcation areas
- Developmental concavities

25 kHz Part Code:
30 kHz Part Code:



Left
| UI25KSF10L
| UI30KSF10L



Straight
| UI25KSF10S
| UI30KSF10S



Right
| UI25KSF10R
| UI30KSF10R



Set of Three
| UI25KSFSET
| UI30KSFSET

FIXED WATER DELIVERY,
THINNER TIP DESIGN

POWER LEVEL

LOW – MEDIUM

LOW – MEDIUM

LOW – MEDIUM

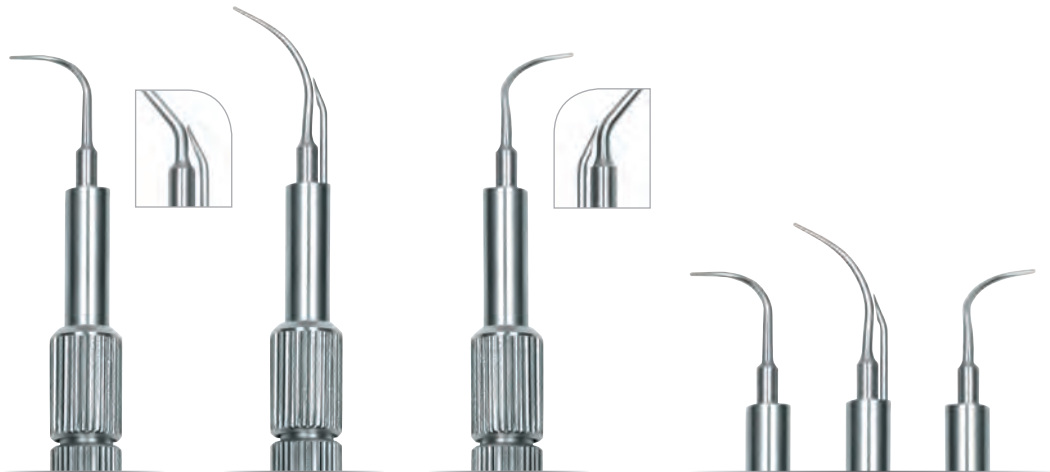
LOW – MEDIUM



AFTER FIVE INSERTS

Ideal for:

- Light to moderate deposits even in periodontal pockets
- Furcation areas
- Developmental concavities



Left

| UI25KSL10L
| UI30KSL10L

Straight

| UI25KSL10S
| UI30KSL10S

Right

| UI25KSL10R
| UI30KSL10R

Set of Three

| UI25KSLSET
| UI30KSLSET

25 kHz Part Code:
30 kHz Part Code:

POWER LEVEL

LOW—MEDIUM

LOW—MEDIUM

LOW—MEDIUM

LOW—MEDIUM

ORIGINAL PROPHY INSERTS

ORIGINAL PROPHY INSERTS

The standard diameter Prophy style tip is the original ultrasonic insert design, with a finely beveled external water delivery tube.

- Light to heavy and tenacious deposits
- Orthodontic cement



Original Prophy

| UI25KP10
| UI30KP10

25 kHz Part Code:
30 kHz Part Code:

POWER LEVEL

LOW—HIGH

ORIGINAL PROPHY PLUS INSERTS

The PLUS insert features a fixed water delivery tube in a lightweight resin handle.

- Light to heavy and tenacious deposits
- Orthodontic cement



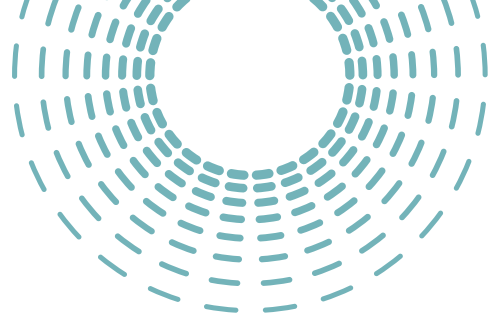
Original Prophy PLUS

| UI25KP10P
| UI30KP10P

LOW—HIGH



REFERENCE SECTION



MAGNETOSTRICTIVE INSERT CLEANING AND CARE

CLEANING

To clean, rinse thoroughly or, if you choose, fully immerse in a mild ultrasonic cleaning solution (pH 7-10.5) like Hu-Friedy's IMS® Enzymax® or Enzymax Earth™ cleaning solutions. Place in ultrasonic cleaning unit for 7-10 minutes or 16-20 minutes if the insert is in a cassette. Thoroughly rinse the insert with tap water and dry completely prior to sterilization.

CARE AND MAINTENANCE

To increase the o-ring life of Hu-Friedy ultrasonic inserts and to prevent water flow from the tip after release of the foot control, take the following steps before placing the insert into the handpiece: Hold the handpiece upright over the sink, activate the foot control and flush the water line for 2 minutes. Fill entire handpiece with water. Gently twist the insert into the handpiece until completely seated.

Swivel and Swivel Direct Flow Inserts:

To maintain a smooth swivel, activate the foot switch and rotate insert 2-3 times.

All Thin Inserts (#100 Swivel, #100 Swivel Direct Flow, #100 Streamline, Swivel XT 30k and After Five): Use on LOW TO MEDIUM power settings only. Swivel XT 25 kHz should be used on low power only.

WARNING: Do not expose resin or silicone handled ultrasonic inserts to solutions containing phenols, glutaraldehydes, iodophors or to dry heat sterilization.

Use steam sterilization (autoclave) only for Swivel and Swivel Direct Flow inserts. Detailed care and maintenance instructions are available upon request or go to Hu-Friedy.com.

STERILIZATION

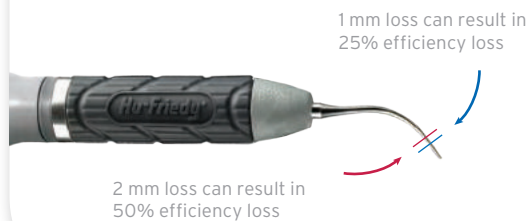
Sterilize Hu-Friedy ultrasonic inserts in an instrument cassette (i.e. IMS instrument cassette) or paper pouch in a steam autoclave. Chemical vapor sterilization is unacceptable for Swivel and Swivel Direct Flow inserts. Rapid heat transfer sterilization and cold liquid/chemical sterilants are not recommended and may void warranty. Avoid contact with corrosive chemicals such as chlorides, sulfates and surface disinfectants. Do not expose to solutions containing phenols.

OPTIMUM EFFICIENCY

Scaling efficiency can significantly diminish with worn insert tips. Inferior performance, patient discomfort, and poor water delivery can result from worn, damaged, bent, or altered tips.

For optimal scaling efficiency, we recommend checking inserts monthly for signs of wear.

Replacement of Worn Inserts Actual Size Guide



All thin inserts (Swivel #100, Swivel XT, Swivel Direct Flow #100, Streamline #100, After Five inserts) should be used on LOW TO MEDIUM power settings only.



POWER DISPERSION

Most Powerful

- #1 point of tip
- #2 concave surface
- #3 convex surface
- #4 lateral surfaces

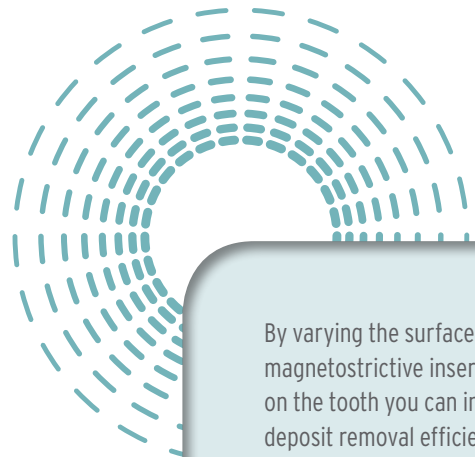
Least Powerful

Insert Surfaces

After Five inserts are 40% thinner than the Original Prophy designs

MAGNETOSTRICTIVE INSERT APPLICATION CHART

	#10 Universal	#100 Thin	#1000 Triple Bend	Swivel XT	#3 Beaver tail	After Five Inserts (Left, Straight, Right)	Original Prophy
Light to moderate deposits	•	•	•				•
Heavy deposits Orthodontic cement	•		•		•		•
Light to moderate deposits in periodontal pockets		•		•		•	
Tenacious subgingival deposits	•		•	•			•
Furcation areas				•		•	
Developmental concavities						•	



By varying the surface of the magnetostrictive insert tip on the tooth you can increase deposit removal efficiency (concave and convex surfaces) or increase patient comfort (lateral surfaces).



REFERENCE SECTION

IMPORTANT NOTE: Hu-Friedy and Dentsply are competitors. This chart is not intended to suggest that the respective Dentsply and Hu-Friedy ultrasonic inserts are equivalent or comparable. Instead, this chart suggests an alternative Hu-Friedy brand ultrasonic insert based on the experience and recommendations of clinicians who have previously used the listed Dentsply inserts. Cavitron and Dentsply are registered trademarks of Dentsply International.

MAGNETOSTRICTIVE CROSS REFERENCE GUIDE

HU-FRIEDY ULTRASONIC INSERTS			
Tip Style	Handle Color	25 kHz	30 kHz
SWIVEL			
#10 Universal	lavender	UI25SS10	UI30SS10
#100 Thin	black	UI25SS100	UI30SS100
#1000 Triple Bend	orange	UI25SS1000	UI30SS1000
Swivel XT	purple	UI25SSXT	UI30SSXT
SWIVEL DIRECT FLOW			
#10 Universal	lavender	UI25SD10	UI30SD10
#100 Thin	black	UI25SD100	UI30SD100
#1000 Triple Bend	orange	UI25SD1000	UI30SD1000
After Five Straight	dark blue	UI25SDS	UI30SDS
After Five Right	red	UI25SDR	UI30SDR
After Five Left	teal	UI25SDL	UI30SDL
Set of 3*	dark blue red teal	UI25SDSET	UI30SDSET
STREAMLINE DIRECT FLOW			
#10 Universal	lavender	-	UI30SF10
#100 Thin	black	-	UI30SF100
#1000 Triple Bend	orange	-	UI30SF1000
After Five Straight	dark blue	-	UI30SFS
After Five Right	red	-	UI30SFR
After Five Left	teal	-	UI30SFL
Set of 3*	dark blue red teal	-	UI30SFSET
STREAMLINE			
#10 Universal	lavender	UI1025K	UI1030K
#100 Thin	black	UI25K100S	UI30K100S
#1000 Triple Bend	orange	UI100025K	UI100030K
#3 Beavertail	yellow	UI325K	UI330K
ORIGINAL PROPHY DESIGNS			
#10 Universal	metal	UI25KP10	UI30KP10
#10 Universal PLUS	green	UI25KP10P	UI30KP10P
AFTER FIVE - PERIODONTAL DEBRIDEMENT			
After Five Straight	metal	UI25KSL10S	UI30KSL10S
After Five Right	metal	UI25KSL10R	UI30KSL10R
After Five Left	metal	UI25KSL10L	UI30KSL10L
Set of 3*	metal	UI25KSLSET	UI30KSLSET
AFTER FIVE PLUS - PERIODONTAL DEBRIDEMENT			
After Five PLUS Straight	dark blue	UI25KSF10S	UI30KSF10S
After Five PLUS Right	red	UI25KSF10R	UI30KSF10R
After Five PLUS Left	teal	UI25KSF10L	UI30KSF10L
Set of 3*	dark blue red teal	UI25KSFSET	UI30KSFSET

DENTSPLY CAVITRON** INSERTS		
Tip Style	25 kHz	30 kHz
TFI #10 Straight		
	grey	black
TFI #1000 Straight Triple		
	grey	black
CTI-10S THINsert		
		purple
FSI-10		
	dark blue	dark blue
FSI-SLI 10S		
	green	green
FSI-1000		
	dark blue	dark blue
FSI-SLI 10S		
	green	green
FSI-SLI 10R		
	green	green
FSI-SLI 10L		
	green	green
FSI-SLI Assorted		
	green	green
FSI-10		
	-	dark blue
FSI-SLI 10S		
	-	green
FSI-1000		
	-	dark blue
FSI-SLI 10S		
	-	green
FSI-SLI 10R		
	-	green
FSI-SLI 10L		
	-	green
FSI-SLI Assorted		
	-	green
TFI #10 Straight		
	grey	black
TFI #1000 Straight Triple		
	grey	black
Bend TFI #3 Thin Beavertail		
	grey	black
CLASSIC "P"		
	metal	metal
SLI SLIMLINE**		
	metal	metal
	metal	metal
	metal	metal
	metal	metal

* Set of 3 includes a straight, right and left.

** Dentsply, Cavitron, Slimline, Thru Flow, Classic "P", TFI, SLI, FSI and Focused Spray are trademarks of DENTSPLY International, Inc.

Clinicians who use FSI® and Focused Spray® and FSI-SLI Focused Spray Slimline inserts may consider Swivel Direct Flow or Streamline Direct Flow as an alternative.**



PROPHYLAXIS PROTOCOL RE-IMAGINED

Hu-Friedy recently announced a partnership with Switzerland's Electro Medical Systems (EMS) that will reimagine prophylaxis in the U.S. and Canada as Hu-Friedy becomes the exclusive U.S. and Canadian distributor of EMS Piezon® power scaling technology and AIR-FLOW® air polishing products. With nearly 140 years of combined experience and clinically proven products and processes, Hu-Friedy and EMS are ideally positioned to provide clinicians and patients with the most comprehensive prophylaxis treatment methods, combining Piezon® and AIR-FLOW® with Hu-Friedy's extensive line of hand scaling instruments and our legendary service and support.



AIR-FLOW®
AIR POLISHING



PIEZON® SCALING

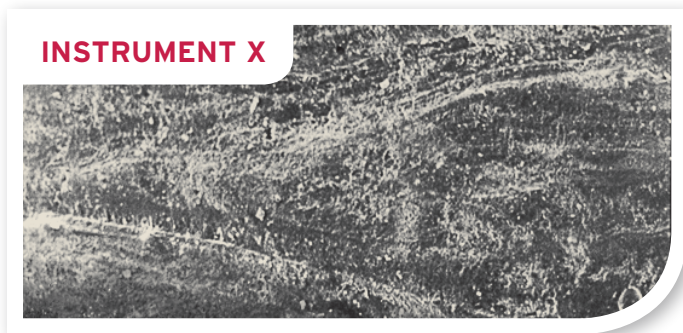
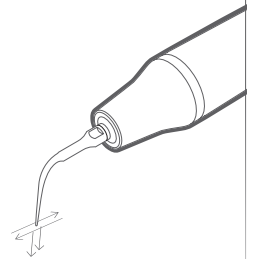
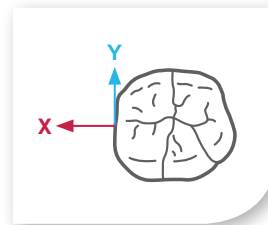


EVEREDGE®
TECHNOLOGY

ABOUT PIEZON® TECHNOLOGY

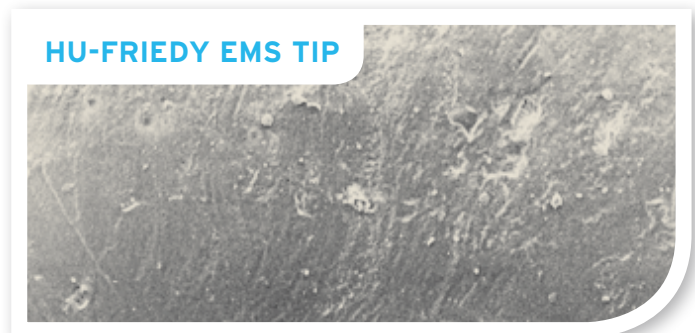
Piezon® Technology delivers controlled oscillating action aligned with the tooth structure.

- Gentle treatment with minimum abrasion of the tooth
- Easy to use due to intelligent feedback control
- Efficient, comfortable delivery of 32,000 movements per second as well as cavitation and acoustic streaming
- Maximum retention of the oral gingival epithelium and less painful treatment due to optimized linear instrument movement



INSTRUMENT X

Tooth surface treated with instrument X looks rough after use.



HU-FRIEDY EMS TIP

Tooth surface treated with a Piezon® scaler and Hu-Friedy EMS piezo tip is smooth after use.



PIEZON® POWER SCALING UNITS

The Piezon® power scaling generators combine the precision of piezo technology, uniform power output and ergonomics in four easy to use devices that will optimize treatment efficiency and increase both patient and clinician comfort.

PIEZON® MASTER 700 UNIT

The latest, most sophisticated Piezon® technology in the Piezon® Master 700 Unit uses optimized communication between the handpiece, tip and module. This enhanced communication actually signals the module to provide more power to the tip when it encounters calculus.

- Touch n' go panel with hygienic user interface leads to easy treatment setup
- Piezon LED handpiece with circular light emission for increased vision of the treatment site
- Two liquid bottles are easily interchanged, allowing for enhanced patient treatment based on procedure
- Intuitive and automatic cleaning mode is convenient for the clinician
- Capacity for two handpieces to accommodate two different tips for faster results and double efficiency with each patient
- Flexible and durable handpiece cord offers direct irrigation control right from the base of the cord

Piezon® Master 700 Unit
| FT-194#HF/A/001





PIEZON® 250 & PIEZON® 150 SCALERS

The Piezon® 250 and Piezon® 150 combine power, precision, design and function in a small package. The LED handpiece ensures enhanced visibility while the fingertip control delivers 35 individual power increments for the exact power you want, when you want it.

- Large, ergonomic interface allows the clinician to easily select or change the desired power setting during use
- Illuminated handpiece remains lit for 20 seconds after the foot control is released for continued visibility of the treatment site and easier diagnosis
- Instantaneous tip amplitude adjustment offers smooth treatment and ultimate patient comfort
- Exceptionally low noise level during operation provides a more peaceful patient experience
- Two water delivery options: stand-alone unit with medicament bottle (Piezon® 250) or connect to the office water system with an external water filter (Piezon® 150)

* See AIR-FLOW® section for AIR-FLOW®/Piezon® Combination Units

Piezon® 250
| FT-224#HF/A/001



Piezon® 150
| FT-223#HF/A/001

Note: Hu-Friedy EMS
Piezon® products sold in
U.S. and Canada only.



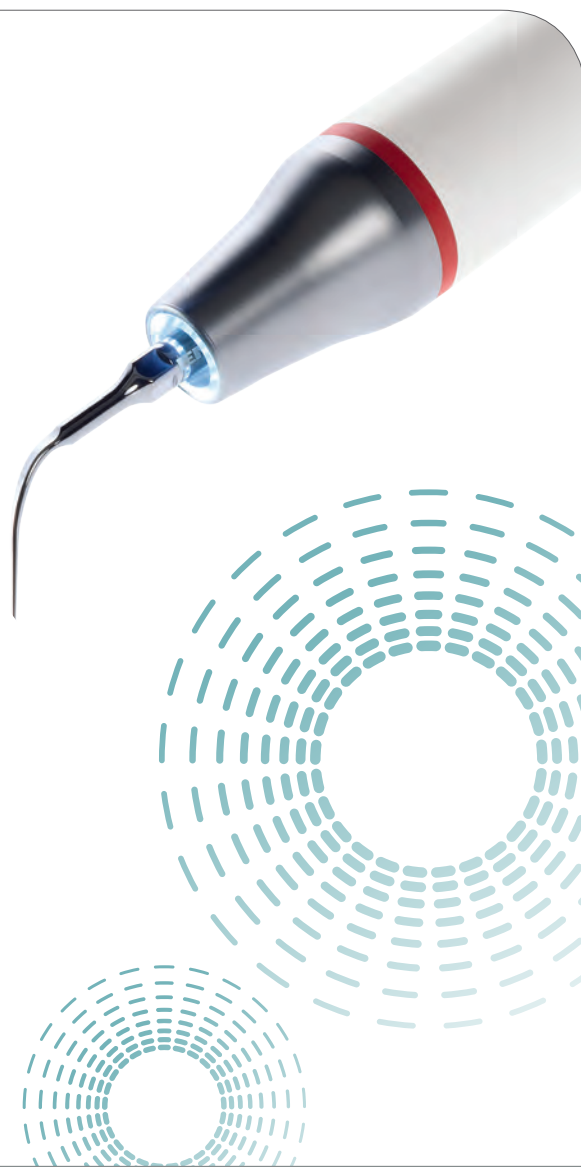
PIEZON® ACCESSORIES

POINTS OF PERFORMANCE

All Hu-Friedy Piezon® units come with one LED handpiece. The fiber-optic lighting reduces eye strain and enhances visibility of the treatment area, while the large diameter, lightweight handle relaxes hand grasp and reduces muscle strain for increased clinician comfort.

- Fiber-optic illumination reduces eye strain and enhances visibility.
- The large diameter ergonomic handpiece relaxes hand grasp for accuracy and control, eliminates pressure points and improves tactile sense.
- The lightweight handle reduces muscle strain and hand fatigue, enhancing clinician comfort.

Original Piezon LED HP (all)	EN-060#HF/A
Light guide set (all)	FV-065
Bottle 350 ml USA (all)	EG-064/HF
Bottle 500 ml (all)	EG-082/HF
Maintenance set (700)	EQ-123HF
Multifunctional foot switch (flat) (700)	EK-169#HF/A
Magnetic handpiece holder, right (700)	FV-077HF
Magnetic handpiece holder, left (700)	FV-078HF
Multifunctional foot switch (250, 150)	EK-128#HF/A
Power supply (150)	EK-357#HF/A
Piezon HP hose (250,150)	EM-140#HF/A
Water hose and external filter (150 only)	FV-090
External water filter (150 only)	FV-091
Maintenance set (150)	FV-084HF
Maintenance set (250)	FV-085HF



COMBITORQUE® WRENCH

Each Hu-Friedy EMS piezo tip comes in a Combitorque® wrench for easy sterilization and storage. Combitorque® wrenches aid in connecting the tip to handpiece, and reduce the risk of instrument loss and injury.



| FV-060HF



HU-FRIEDY EMS PIEZO TIPS

Hu-Friedy EMS piezo tips are made from premium-quality, biocompatible surgical steel. The highly precise manufacturing processes offer both the reproducible oscillating action that makes Piezon® technology comfortable for your patients and the highly polished instrument surface which increases the lifespan.

SCALING AND PERIO TIPS



Instrument A
| DS-001HF/HF

For removing supragingival deposits in all quadrants



Instrument P
| DS-011HF/HF

For removing supra - and subgingival calculus in all quadrants



Instrument C
| DS-002HF/HF

For removing deposits and stain - especially suitable for removing bonding residue, (e.g. in orthodontics)



Instrument B
| DS-003HF/HF

For cleaning lingual surfaces with heavy stain and calculus



Instrument PS
| DS-016HF/HF

For removing calculus in deep periodontal pockets in all quadrants.



Instrument PL1
| DS-030HF/HF

Left-curved instrument for periodontal debridement - especially suitable for difficult-to-reach interproximal surfaces



Instrument PL2
| DS-031HF/HF

Same as PL1 instrument with a right curve



Instrument PL3
| DS-032HF/HF

Instrument for cleaning and disinfecting periodontal pockets - especially suitable for follow-up and recall visits



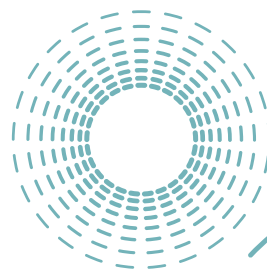
Instrument PL4
| DS-033HF/HF

Left-curved instrument with small ball (> 0.6 mm diameter) on instrument tip for the periodontal debridement of furcations and concavities



Instrument PL5
| DS-034HF/HF

Same as PL4 instrument with right curve





During endo treatment, the instrument finish facilitates smooth clean-outs of even the smallest root canals.

ENDODONTIC TIPS



Instrument RT1
| DS-066HF/HF
Diamond-tipped instrument for locating canals and removing calcifications in the coronal third of the root canal system



Instrument RT2
| DS-067HF/HF
Diamond-tipped instrument for removing ledges. Creates straight canal for easy viewing of broken instruments



Instrument D
| DS-005HF/HF
For loosening crowns, bridges and pins placed previously with phosphate cement



Instrument H
| DS-004HF/HF
For the lateral thermal condensation of gutta-percha



Flat Wrench
| DT-018HF
To change instruments for all three file holders



180° File Holder
| DS-069HF/HF
For use with RT3, Berutti and RE2 instruments



120° File Holder
| DS-010HF/HF
For the flexibility to use different endo files, specially suited for anterior and premolar areas. Also suitable for RE2 and Berutti instruments



90° File Holder
| DS-012HF/HF
For the flexibility to use different endo files, specially suited for the molar area



Instrument RT3
| DT-062HF
Very long and fine instrument for the removal of broken instrument tips. Use with 180° file holder (5 pack)



Instrument RE2
| DT-061HF
Instrument for retrograde root-canal isthmus preparation. The surface is coated with non-abrasive titanium nitride. Use with 120° or 180° file holders (5 pack)



Berutti Instrument
| DT-060HF
Diamond-tipped instrument for the retrograde preparation of root canals. A tapered design allows minimally invasive access and therefore fewer postoperative complications. Use with 120° or 180° file holders (5 pack)



Instrument ESI
Non-cutting NiTi instrument for the effective cleaning and irrigation of the root canal system (6 files)
Starter Kit
| FS-279#HF/A/001
Refill
| DT-069HF



Endo K-Type Files

| DT-011

The root canal system (Use files in 90° or 120° file holders)
K-Files for cleaning and disinfecting

Endo File Set:
ISO 15/20/25/30/35 mm
6 pieces each



15 20 25 30 35

6 endo files	ISO 15	white	DT-006
6 endo files	ISO 20	yellow	DT-007
6 endo files	ISO 25	red	DT-008
6 endo files	ISO 30	blue	DT-009
6 endo files	ISO 35	green	DT-010

INSTRUMENT PI FOR IMPLANTS



- Easily debrides implant and restoration surfaces
- Comfortable for the patient thanks to smooth, plastic surface coating and gentle tip motion
- Instrument coating made of a high-tech Polyether Ether Ketone (PEEK) fiber that safely cleans implant abutment surfaces and restorations
- Stainless steel core to protect, the instrument from breakage
- Fully autoclavable



Starter Kit

| FS-295#HF/A/001

4 PI instruments, 1 file holder (120°) and 1 flat wrench

Refill

| DT-065HF

4 PI instruments

DIAMOND TIPPED INSTRUMENTS

HPL3

| DS-075HF/HF

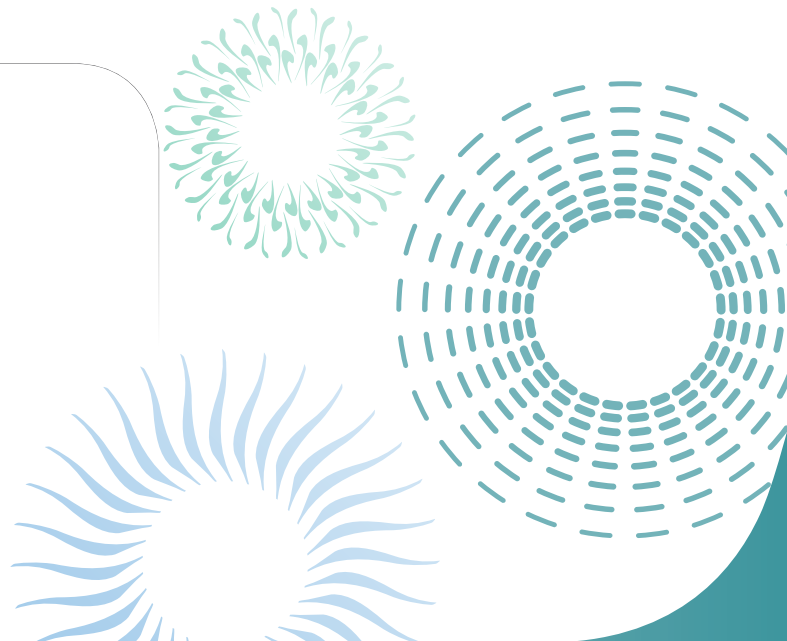
70µm grain

DPL3

| DS-065HF/HF

15µm grain

Diamond-tipped instruments for smoothing restoration overhangs





S-SERIES TIPS

Hu-Friedy Symmetry S-Series tips are compatible with Symmetry IQ, Satelec/Acteon and NSK piezo generators.



SCALING TIPS



S10 Universal

| **USS10**

Standard diameter tip used to remove heavy supragingival deposits.

POWER LEVEL MED-HIGH



P Universal

| **USP**

Standard diameter tip used to remove moderate to heavy deposits located supragingivally and in shallow pockets.

MED-HIGH



P10 Universal

| **USP10**

Standard diameter tip used to remove light deposits and plaque. Tip features smooth edges for safe removal of soft and hard deposits.

POWER LEVEL MED



100 Universal

| **US100**

Probe-sized tip used to remove light deposits in shallow to moderate pockets and for periodontal maintenance.

MED-HIGH

AFTER FIVE

These probe sized tips are designed to enhance access into periodontal pockets and improve adaptation in interproximal areas, allowing the clinician to more thoroughly debride difficult to reach areas to achieve better clinical results.



S10 Universal

| **USAFS**

POWER LEVEL MED



Right

| **USAFR**

MED



Left

| **US AFL**

MED





PERIO



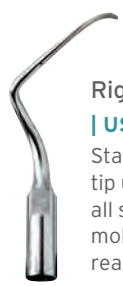
Universal Perio
| USU
 Thin tip used to remove light deposits and plaque. Tip features smooth edges for safe removal of soft and hard deposits.

POWER LEVEL MED



Left Perio
| US4L
 Standard diameter contra-angle tip used to remove calculus on all surfaces of premolars and molars, especially difficult to reach interproximal surfaces.

POWER LEVEL LOW



Right Perio
| US4R
 Standard diameter contra-angle tip used to remove calculus on all surfaces of premolars and molars, especially difficult to reach interproximal surfaces.

POWER LEVEL LOW



3 Perio
| USP3
 Thin-bladed curette-like tip used to remove heavy deposits and necrotic cementum on anteriors and premolars.

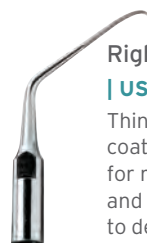
POWER LEVEL LOW

DIAMOND-COATED



Left Diamond
| US2LD
 Thin, contra-angle diamond-coated finishing instrument used for removal of residual debris and designed to enhance access to deep periodontal pockets and furcations.

POWER LEVEL LOW



Right Diamond
| US2RD
 Thin, contra-angle diamond-coated finishing instrument used for removal of residual debris and designed to enhance access to deep periodontal pockets and furcations.

POWER LEVEL LOW



Straight Diamond
| US1D
 Thin, straight diamond-coated finishing instrument used for removal of residual debris and designed to enhance access to deep periodontal pockets primarily in anterior areas.

POWER LEVEL LOW

*Satelec and NSK are trademarks of Acteon, Inc., and Nakanishi Inc. respectively.



S-SERIES TIPS

GUARDIAN WRENCH/TIP CARRIER

Symmetry Piezo Tips come in the Guardian Wrench Tip Carrier for safe and easy connection to the handpiece.

Wrenches also hold the tip during cleaning and sterilization to prevent loss of or damage to the tip.



Scaling Wrench/
Tip Carrier



Scaling Wrench/
Tip Carrier



Perio Wrench/
Tip Carrier

POWER LEVEL	MEDIUM—HIGH	LOW—MEDIUM	LOW
	Use primarily on medium to high power (in orange mode or scaling mode if applicable).	Use primarily on low to medium power (in blue mode or scaling mode if applicable).	Use primarily on low power (in green mode or perio mode if applicable).

WHAT TYPE OF STERILIZATION UNIT DOES YOUR OFFICE USE?

If using a Statim 2000 unit, you will need to order a special shorter Hu-Friedy Guardian Wrenches separately to ensure compatibility with your sterilizer.

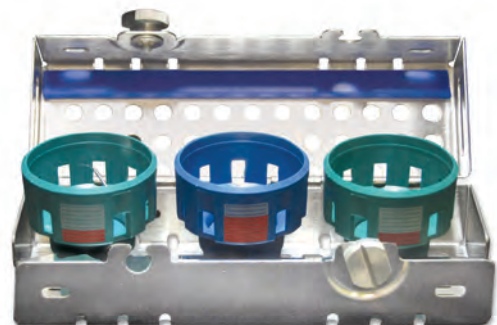
- Green, S-Series, Short Wrench* | [USRTWSG](#)
- Blue, S-Series, Short Wrench* | [USRTWSB](#)
- Green, E-Series, Short Wrench* | [UERTWSG](#)
- Blue, E-Series, Short Wrench* | [UERTWSB](#)

REPLACEMENT PART

Black Replacement Wrench | [USRTW](#)

SYMMETRY IQ CASSETTES

HANDPIECE CASSETTE
DOUBLE SHOWN



Handpiece Cassette Single
| [IM30IQ8](#)
Symmetry handpiece not included.
Dimensions: 1.5" x 8" x 1.25"
(38 mm x 203 mm x 32 mm)

Handpiece Cassette Double
| [IM60IQ8](#)
Symmetry handpiece not included.
Dimensions: 3" x 8" x 1.25"
(76 mm x 203 mm x 32 mm)

Wrench Cassette (Blue)
| [IMI38](#)
Accommodates three Symmetry Piezo
Tips in Guardian Wrenches.
Exterior Dimensions: 5.63" x 1.95" x 1.77"
(143 mm x 49.5 mm x 45 mm)



PIEZO REFERENCE

CHARACTERISTICS OF TIP MOVEMENT

The smooth linear movement generated by piezoelectric systems creates a stroke pattern that is similar to hand instrumentation. Adapting the lateral surface of the piezo tip against the tooth surface (similar to a hand instrument) will increase clinical efficiency.

ESSENTIALS OF POWER DISPERSION

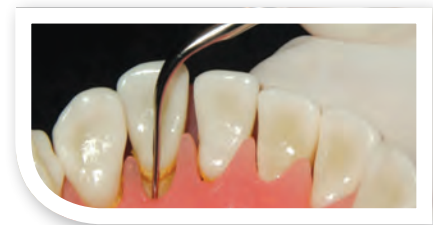
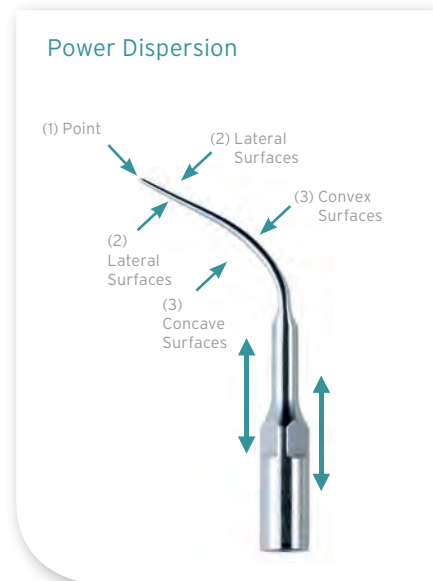
- Most of the energy is dispersed at the point of tip (1).
- The lateral surfaces of the tip (2) are moving in a linear pattern, similar to the stroke of a bladed hand instrument.
- Adaptation of this lateral surface provides the most efficient deposit removal.
- Adapt the terminal 2-3 mm of tip for optimal performance.
- When concave front or convex back surfaces (3) are adapted to the tooth surface, the instrument will chatter against the surface rather than effectively remove deposit.

PIEZO TIP ADAPTATION

- Adapt the lateral surface to the tooth for optimal performance.
- Maintain tip angulation near zero degrees – parallel to tooth surface.
- To minimize the risk of root damage, never adapt tip at a 90° angle.
- Use little or no lateral pressure and let the tip do the work for you.
- When concave front or convex back surfaces are adapted to the tooth surface, the instrument will chatter against the surface rather than effectively instrument.

SENSORY OBSERVATIONS

- Smooth vibration enhances tactile sense for instrumentation.
- The smooth motion of the tip is an excellent option for patients with root sensitivity.
- Piezo tip vibration is very smooth and quiet when adapted correctly on a lateral surface.
- Deposits are pulverized, resulting in a slurry of debris that is visible in the water at the back of the mouth.
- Calculus is generally not removed in big chunks as commonly seen during magnetostrictive instrumentation.



Lateral surface of tip in use

To achieve the greatest efficiency and patient comfort, it is best to adapt the lateral sides of your piezoelectric instrument to the surface of the tooth.



PIEZO TIP CLEANING AND CARE

CLEANING & STERILIZATION

- Piezo tips remain in the Combitorque® Wrench during the complete cleaning, disinfection and sterilization reprocessing cycle.
- Clean using ultrasonic cleaner or thermodisinfector.
- Steam sterilize for at least 4 minutes at 270°F/132°C or 30 minutes at 250°F/121°C. Do not heat above 275°F/135°C.
- Recommend at least 30 minute dry time after sterilization cycle.
- Clean, disinfect, inspect and steam sterilize before each use following the respective equipment manufacturer's users instructions.
- Do not expose to phenols, iodophors or dry heat sterilization.
- Detailed care and maintenance instructions are available upon request or go to Hu-Friedy.com.

TIP INSTALLATION

1. Your Hu-Friedy EMS Piezo tip comes with its own combitorque wrench.
2. Attach tip to handpiece using the Combitorque® Wrench by aligning the threaded end of the tip to the handpiece.
3. Rotate the Combitorque® wrench clockwise. Once the instrument is screwed all the way in, give an extra quarter of a turn to obtain the required torque. Incomplete tightening may cause the tip to become loose or lack vibration.
4. When using the Combitorque® Wrench without a tip previously inserted into the tip carrier, take the following step: place the Combitorque® Wrench over the tip by slipping tip through the small hole in the bottom, closed end of the tool. This will position the tip within the Combitorque® Wrench for safety and convenience.

TIP REMOVAL

1. Hold the handpiece vertically. Insert the tip through the hole in the bottom of the Combitorque® Wrench.
2. Depress wrench slightly while rotating to fully secure tip to wrench.
3. Turn the wrench counter-clockwise to loosen and remove tip from handpiece.
4. Once removed from handpiece, do not remove the tip from the wrench carrier.

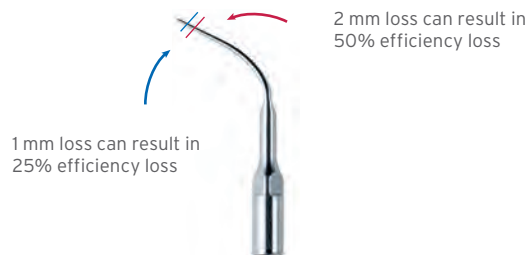
OPTIMUM EFFICIENCY

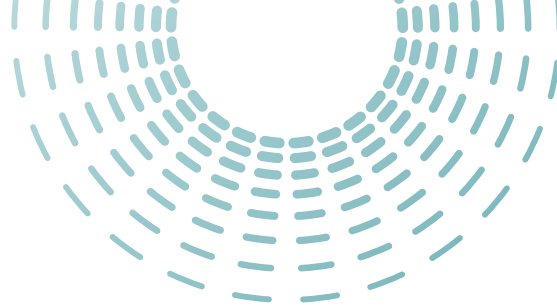
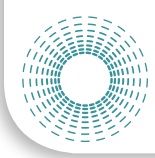
Scaling efficiency can significantly diminish with worn tips. Inferior performance and poor water delivery can result from worn, damaged, bent, or altered tips. For optimal scaling efficiency, we recommend checking tips regularly for signs of wear.

APPLICATION CHART

	S10	U	100	P10	P3	4R, 4L	ID	2RD, 2LD	P	AFS, AFL, AFR
Light to moderate supragingival deposits	•	•	•		•				•	
Heavy supragingival deposits	•			•					•	
Light to moderate deposits in shallow pockets		•	•		•		•		•	•
Light to moderate deposits in deep periodontal pockets					•		•	•		•
Moderate to heavy deposits in deep periodontal pockets						•				
Furcation areas								•		•

Replacement of Worn Tips Actual Size Guide



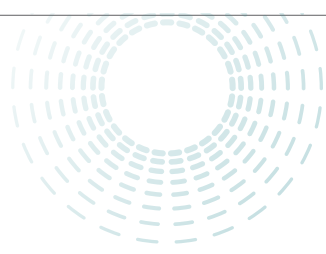


S-SERIES POWER SETTINGS CROSS REFERENCE

TIP	APPLICATION				POWER SETTING				
	HU-FRIEDY	SATELEC	NSK	POWER	HU-FRIEDY SYMMETRY	SATELEC P5	SATELEC SP NEUTRON	NSK VARIOS	
USS10	■	■	■	■ MED	● 2-8 ● 1-4	7-9	8-10	Min-3	
USP10	■	■	■	■ MED	● 1-4	7-8	8-10	Min-3	
USP	■	■	■	■ MED	● 2-10 ● 1-4	7-9	8-10	Min-3	
US100	■	■	■	■ MED	● 4-10 ● 1-3	4-6	6-8	Min-1	
USU	■	■	■	■ MED	● 4-10 ● 1-3	7-8	1-6	Min-4	
USAFS	■	■	■	■ MED	● 1-5	7-8	8-10	Min-3	
USAFL	■	■	■	■ MED	● 1-5	7-8	8-10	Min-3	
USAFR	■	■	■	■ MED	● 1-5	7-8	8-10	Min-3	
USP3	■	■ PERIO	■ PERIO	■ LOW	● 4-10	1-3	1-4	Min-4	
US4R	■	■ PERIO	■ PERIO	■ LOW	● 6-10				
US4L	■	■ PERIO	■ PERIO	■ LOW	● 1-6				
US1D	■	■ PERIO	■ PERIO	■ LOW	● 7-10 ● 1-6				
US2RD	■	■ PERIO	■ PERIO	■ LOW	● 1-5	1-3	1-4	Min-4	
US2LD	■	■ PERIO	■ PERIO	■ LOW	● 1-5	1-3	1-4	Min-4	

HU-FRIEDY S-SERIES ITEM CODE CROSS REFERENCE

HU-FRIEDY	USS10	US100	USP10	USP	USU	USP3	US4R	US4L	US1D	US2RD	US2LD	USAFS	USAFL	USAFR
NSK VARIOS	G1	G6	G4	G5	P20	P10				PD3	PD2	P20	P21L	P21R
SATELEC	S1	10Z	10P	1S	PFU	H3	H4R	H4L	H1	H2R	H2L			





REFERENCE SECTION

HU-FRIEDY EMS APPLICATION CHART

PERIO/SCALING

	A	B	C	P	PS	PI	PL1	PL2	PL3	PL4	PL5
Supragingival deposits	●	●	●	●	●						
Shallow pockets				●	●						
Light to moderate deposits in deep periodontal pockets				●	●		●	●			
Moderate to heavy deposits in deep periodontal pockets				●			●	●			
Furcation areas							●	●		●	●
Implant surfaces and restorations						●					
Periodontal debridement					●		●	●			
Cleaning and irrigation of periodontal pockets					●		●	●	●		
Ortho Cement		●	●								

ENDODONTIC

	ESI	K-type files	RT1	RT2	RT3	H	D	Berutti	RE3
Preparation of root canal system	●							●	
Cleaning and irrigation of root canal system	●	●							
Removal of Calcifications			●						
Removal of ledges				●					
Access to broken files in the root canal				●	●				
Thermal condensation of gutta-percha						●			
Removal of crowns and bridges							●		
Retrograde Preparation of Isthmus									●



POWER AND WATER SETTING CHART

HU-FRIEDY EMS TIP	POWER SETTING	WATER FLOW RATE	MODE	FILE HOLDER (if applicable)
A	MED-HIGH	MED-HIGH	STANDARD	
P	LOW-HIGH	MED-HIGH	STANDARD	
PS	LOW-MED	MED-HIGH	STANDARD	
B	LOW-HIGH	MED-HIGH	STANDARD	
C	LOW-HIGH	MED-HIGH	STANDARD	
PL1	LOW-MED	MED-HIGH	STANDARD	
PL2	LOW-MED	MED-HIGH	STANDARD	
PL3	LOW-MED	MED-HIGH	STANDARD	
PL4	LOW-MED	MED-HIGH	STANDARD	
PL5	LOW-MED	MED-HIGH	STANDARD	
RT1	LOW-MED	LOW-HIGH	ENDO	
RT2	LOW	LOW-HIGH	ENDO	
D	LOW-MED	NONE	ENDO	
H	LOW-MED	NONE	ENDO	
RT3	LOW	MED-HIGH	ENDO	90°, 120°, 180°
RE2	LOW-MED	LOW-HIGH	ENDO	90°, 120°, 180°
Berutti	LOW-MED	LOW-HIGH	ENDO	90°, 120°, 180°
ESI	LOW	MED-HIGH	ENDO	90°, 120°
PI	LOW-MED	MED-HIGH	STANDARD	120°
K-type files	LOW	MED-HIGH	ENDO	90°, 120°
HPL3	LOW-MED	MED-HIGH	STANDARD	
DPL3	LOW-MED	MED-HIGH	STANDARD	



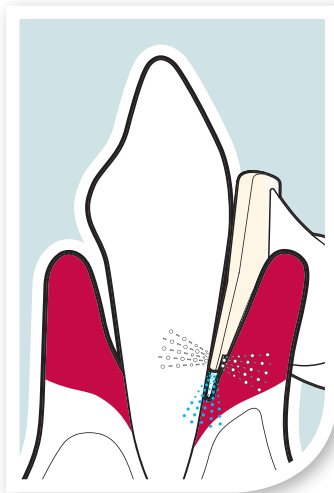
ABOUT AIR-FLOW® TECHNOLOGY

AIR-FLOW® TECHNOLOGY

- Effective for standard supragingival air polishing
- Reliable, fast and efficient for the practice
- Stress-free and comfortable for the patient

AIR-FLOW® PERIO TECHNOLOGY

- Effective disruption of biofilm in periodontal pockets leading to a sustained reduction in bacteria, helping prevent periodontitis or peri-implantitis
- Uniform turbulence of air-powder mixture and water due to patented PERIO-FLOW® nozzle prevents soft-tissue emphysema



SUBGINGIVAL PROPHYLAXIS - AGAINST BIOFILM

- On the subgingival border area - disrupt biofilm with the AIR-FLOW® handpiece and AIR-FLOW® PERIO Powder
- Up to 5 mm* pocket depth - disrupt biofilm with the PERIO-FLOW® handpiece, PERIO-FLOW® nozzle and AIR-FLOW® PERIO Powder

PERIO-FLOW® handpiece and nozzle for subgingival use:

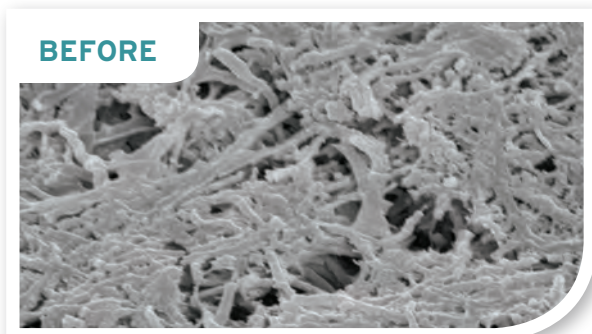
3 horizontal nozzle outlets for air-powder mixture

1 vertical nozzle outlet for water

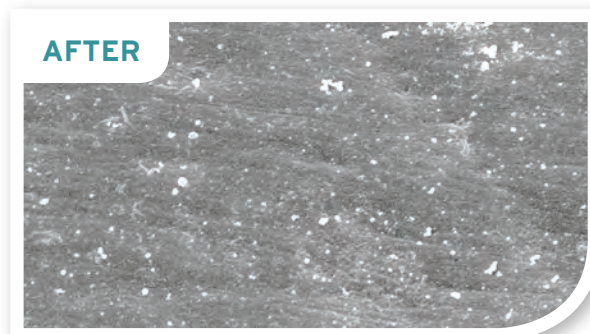
*Up to 10 mm in Canada

SCIENTIFIC EVIDENCE

Photos by Prof. Dr. A. Mombelli, University of Geneva, Switzerland



The white surfaces are parts of the biofilm located in a thick layer on the root surface.



Following treatment with AIR-FLOW®, the biofilm has been disrupted so the root surface is clean and smooth in the periodontal pocket.



AIR-FLOW® AIR POLISHING UNITS

AIR-FLOW® units deliver air polishing that is effective for practitioner and patient alike: reliable, fast and productive for the practice, stress-free, quiet and comfortable for the patient.

AIR-FLOW MASTER® AIR POLISHING UNIT

The world's first subgingival prophylaxis unit, the AIR-FLOW Master allows the clinician to use both AIR-FLOW® and PERIO-FLOW® therapies in one device without interrupting the treatment to switch out the powder and powder chamber.

- Automatic illumination of activated powder chamber for identification
- Easy handling, cleaning and refilling of the powder chambers
- Smooth touch panel surface for simple cleaning and disinfection
- Sleek user interface offers easy adjustment of power and water delivery
- Ergonomic handpieces for working comfort and precision for the clinician

AIR-FLOW MASTER® ACCESSORIES

AIR-FLOW Powder Chamber	EL-368#HF/A
PERIO-FLOW Powder Chamber	EL-474#HF/A
Multifunctional foot switch	EK-169#HF/A
Magnetic handpiece holder, right	FV-077HF
Magnetic handpiece holder, left	FV-078HF
AIR-FLOW HP hose	EM-105#HF/A

AIR-FLOW Master®
Air Polishing Unit
| FT-188#HF/A/001





AIR-FLOW® Master Piezon® Unit
| FT-200#HF/A/001

AIR-FLOW MASTER PIEZON® UNIT

Piezon® and AIR-FLOW® technologies come together to deliver comprehensive prophylaxis treatment to your patients with the AIR-FLOW Master Piezon unit.

- Smooth touch panel surface for simple cleaning and disinfection
- Easy handling, cleaning and refilling of the powder chambers
- Sleek user interface offers easy adjustment of power and water delivery
- Ergonomic handpieces for working comfort and precision for the clinician
- Intelligent feedback control technology senses when higher power is needed to remove deposit and adjusts accordingly

AIR-FLOW MASTER PIEZON® ACCESSORIES

Original Piezon® LED handpiece	EN-060#HF/A
Light guide set	FV-065
AIR-FLOW® handpiece	EL-308#HF/A
AIR-FLOW® handpiece hose	EM-105#HF/A
PERIO-FLOW® handpiece	EL-354#HF/A
Magnetic handpiece holder, right	FV-077HF
Magnetic handpiece holder, left	FV-078HF
Bottle 350 ml	EG-064/HF
Bottle 500 ml	EG-082/HF
AIR-FLOW® Powder Chamber	EL-368#HF/A
PERIO-FLOW® Powder Chamber	EL-474#HF/A
Multifunctional foot switch (flat)	EK-169#HF/A

Note: Hu-Friedy EMS AIR-FLOW® products are sold in the U.S. and Canada only.



AIR-FLOW® S1 AIR POLISHING UNIT

By using a jet formed by air, powder and water, the AIR-FLOW S1 removes dental plaque, soft deposits and surface stains from pits, grooves, interproximal spaces and smooth surfaces of the teeth.

- Free-flow technology to prevent clogging of powder, air and water line
- 3 integrated self-cleaning filters for proper maintenance of the unit
- Incredibly light handpiece tubing allows for easier maneuvering of the handpiece while in use



AIR-FLOW® S1 Unit
| FT-177#HF/A/001



AIR-FLOW® S2 COMBINATION UNIT

The AIR-FLOW S2 combines two devices in one for the professional removal of soft deposits and stains. With the combined use of AIR-FLOW and Piezon® technologies from EMS, it is a complete workstation for the dental hygienist or practitioner.

- Free-flow technology to prevent clogging of powder, air and water line
- Controlled Piezon oscillation pattern for greater efficiency and patient comfort
- Ultrasonic cavitation and acoustic streaming for enhanced treatment efficiency
- 3 integrated self-cleaning filters for proper maintenance of the unit
- Incredibly light handpiece tubing allows for easier maneuvering of the handpiece while in use

AIR-FLOW® S2 AND AIR-FLOW® S1 ACCESSORIES

Foot switch, round	EH-004#HF/A
AIR-FLOW HP hose	EM-094#HF/A
Water filter cartridge	EQ-029HF
Water filter wrench	DT-015HF
Powder chamber cap AFS1/AFS2	EQ-019A/HF
Seal for powder chamber cap	BE-009HF



AIR-FLOW® S2
Combination Unit
| FT-178#HF/A/001





AIR-FLOW® HANDY 3.0 PORTABLE UNITS

The AIR-FLOW handy 3.0 portable air polishing units enable dental practitioners to efficiently, safely and comfortably perform air polishing treatments in any operator. Simply connect the AIR-FLOW® handy 3.0 device to your dental unit for a simple, convenient air polishing experience.

AIR-FLOW® HANDY 3.0

- Use for supragingival applications
- Lightweight device allows for optimal clinician comfort
- Slim handpiece is easy to grip and rotate
- Well-balanced for easy handling



AIR-FLOW® HANDY 3.0 PERIO

- Specially created for subgingival applications
- Perio handpiece with Perio-Flow nozzles remove subgingival biofilm in pockets up to 5 mm* deep
- Same great design and features as the standard handy 3.0



*Up to 10 mm in Canada





Order your handy 3.0 based on the manufacturer of your dental units

AIR-FLOW handy 3.0 Midwest	FT-220#HF/A/001
AIR-FLOW handy 3.0 Kavo	FT-220#HF/A/002
AIR-FLOW handy 3.0 W&H	FT-220#HF/A/003
AIR-FLOW handy 3.0 NSK	FT-220#HF/A/004
AIR-FLOW handy 3.0 Bien Air	FT-220#HF/A/005
AIR-FLOW handy 3.0 Sirona	FT-220#HF/A/006
AIR-FLOW handy 3.0 PERIO Midwest	FT-221#HF/A/001
AIR-FLOW handy 3.0 PERIO Kavo	FT-221#HF/A/002
AIR-FLOW handy 3.0 PERIO W&H	FT-221#HF/A/003
AIR-FLOW handy 3.0 PERIO NSK	FT-221#HF/A/004
AIR-FLOW handy 3.0 PERIO Bien Air	FT-221#HF/A/012
AIR-FLOW handy 3.0 PERIO Sirona	FT-221#HF/A/005



AIR-FLOW® 3.0 HANDY ACCESSORIES

handy 3.0 Handpiece	EL-540#HF/A
handy 3.0 Perio Handpiece	EL-542#HF/A
Maintenance set	FV-087HF
Thermodisinfection adapter	FV-088HF





AIR-FLOW® POWDER

Powders are as integral to air polishing as the device itself, and the innovative AIR-FLOW® powders enable new clinical applications while being safe and comfortable for the patient.

Powder particle composition, size and density all contribute to its impact and intended use, and powder must be selected based on the AIR-FLOW® unit or powder chamber being used.



AIR-FLOW® CLASSIC COMFORT POWDER GRAIN SIZE: 40 µm

The Classic Comfort powder offers the well-known polishing efficiency of sodium bicarbonate with increased patient comfort due to a smaller average grain size.

While the Classic Comfort powder is primarily used for supragingival removal of biofilm and colorations, it can also be used for surface preparation before dental treatments.

Use Classic Comfort powder with: AIR-FLOW powder chambers (AIR-FLOW Master and Master Piezon), the AIR-FLOW S2 and AIR-FLOW® handy 3.0

Classic Comfort Powder refill
(four 250g bottles)

| DV-109/A





AIR-FLOW® CLASSIC POWDER GRAIN SIZE: 65 µm

The AIR-FLOW® Classic powder is effective for dental cleanings and plaque removal. Made from sodium bicarbonate, the most commonly used material for air polishing, AIR-FLOW® Classic powders provide an alkaline effect to protect against tooth decay, and an osmotic effect to support the treatment of gingivitis.

Available flavors: Lemon and Mint



Classic Lemon Powder refill
(four 300g bottles)
| DV-111/A/LEM



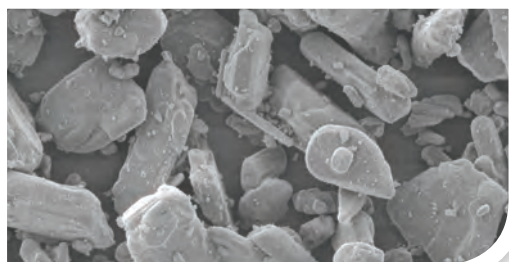
Classic Mint Powder refill
(four 300g bottles)
| DV-111/A/MIN

AIR-FLOW® PERIO POWDER GRAIN SIZE: 25 µm

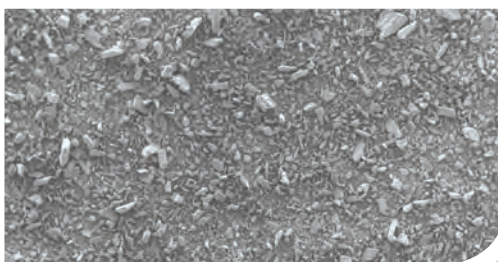
When used with the PERIO-FLOW® handpiece and nozzle, the AIR-FLOW Perio powder's extra-fine, low density grains remove harmful biofilm and bacteria subgingivally. Made from glycine rather than sodium bicarbonate, Perio powder is gentle on the tooth surface, making the air polishing experience easier on the patient.

Use Perio powder with: PERIO-FLOW powder chambers (AIR-FLOW Master and Master Piezon) and the AIR-FLOW® handy 3.0 Perio

Perio Powder refill (four 120g bottles)
| DV-110/A/HS



AIR-FLOW® Classic



AIR-FLOW® Perio Powder



AIR-FLOW® HANDPIECE AND NOZZLES

AIR-FLOW® HANDPIECE

Based on free-flow technology, the AIR-FLOW® handpiece features a 120° angle and is intended for supragingival use. The AIR-FLOW® handpiece can also be used on the subgingival border area.



PERIO-FLOW® HANDPIECE

Especially developed for subgingival applications, the PERIO-FLOW® handpiece together with the PERIO-FLOW® nozzle can be used in periodontal pockets up to 5 mm*. The PERIO-FLOW® handpiece was innovatively designed to deliver the ultrafine AIR-FLOW® PERIO Powder.



Both handpieces are sterilizable.



SUBGINGIVAL PERIO-FLOW NOZZLE

The patented single-use nozzle integrates three horizontal outlets to optimize the gentle turbulence of the air-powder mixture in the subgingival region. Another vertical outlet delivers water to the deepest reaches of the periodontal pockets to rinse the treatment area.

PERIO-FLOW® Nozzle refill box (40ct)

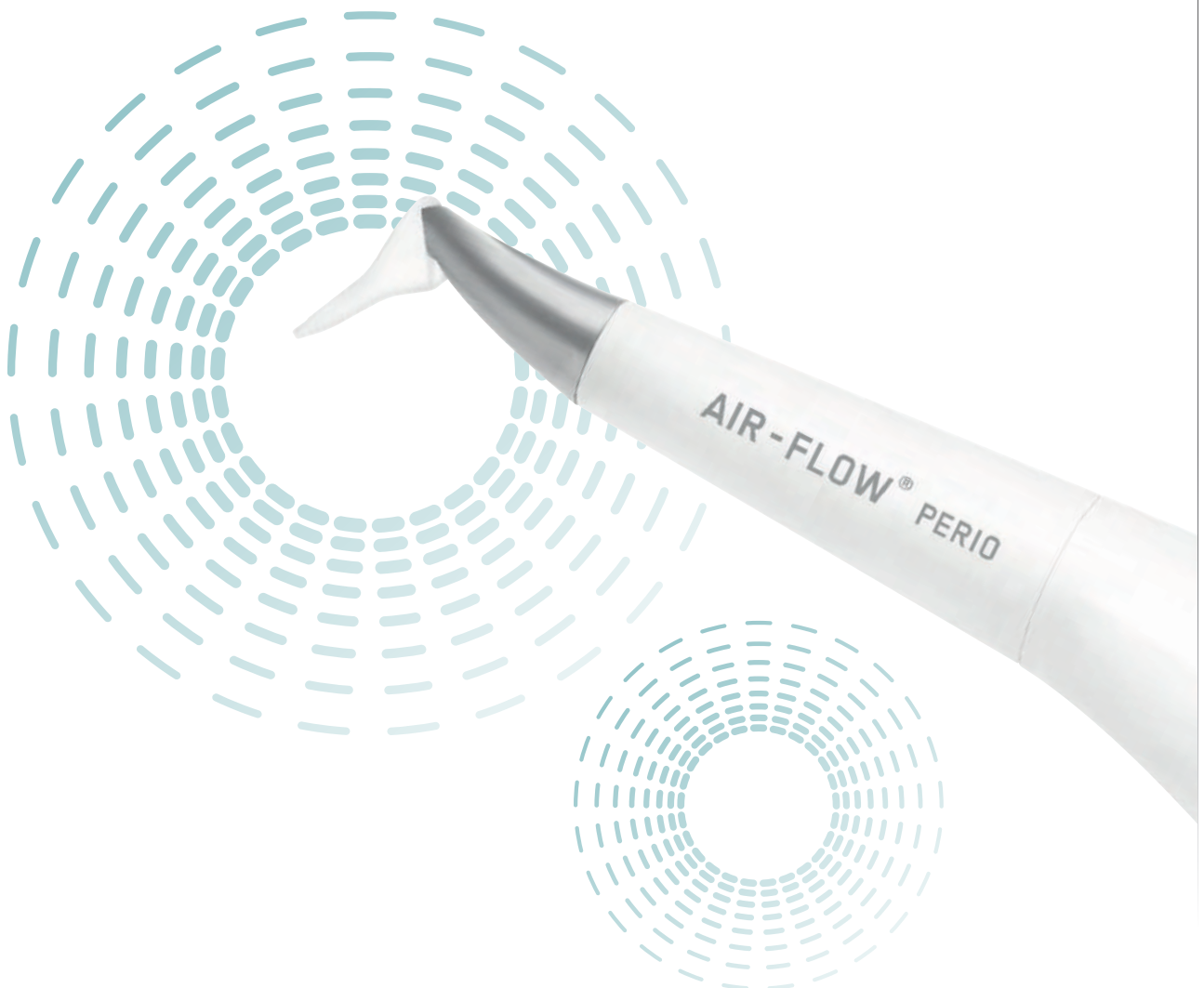
| **DT-113HF**

PERIO-FLOW® Nozzle refill pack (four boxes of 40)

| **DT-113HF/HF**

PERIO-FLOW® nozzle remover

| **DT-095HF**



*Up to 10 mm in Canada



HU-FRIEDY SATISFACTION GUARANTEE

Hu-Friedy is committed to YOU, our valued customer. If for any reason you are unhappy with your Hu-Friedy power equipment, inserts or tips within the first 30 days of purchase, simply return it with the invoice for a product exchange or full refund – no questions asked. No other company offers such a comprehensive guarantee.

