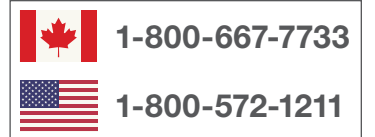


# SciCan HYDRIM® C61W G4 Quick Reference Guide

Operator's Manual should be consulted before using this washer.



## BASIC OPERATION

**1** Power on the unit.

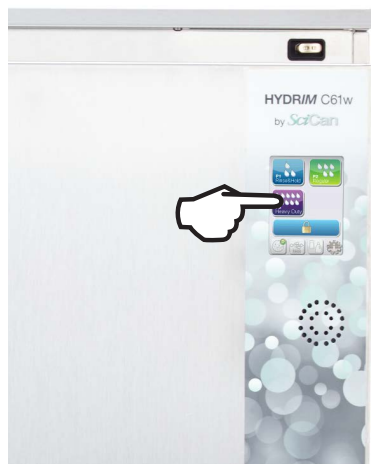


The button is inside the kick plate.

**2** Load Instruments and close the door.



**3** Select cycle.



**4** Press START.



## TOUCHSCREEN



### Rinse and Hold Cycle

Prevents soil from drying on instruments. Incomplete loads that will not be washed within the hour. NOT a cleaning cycle.



### Regular Cycle

Moderately soiled loose instruments.



### Heavy Duty Cycle

Heavily soiled instruments and cassettes.



Door Lock



User/Technical Menu



Network Connection



USB



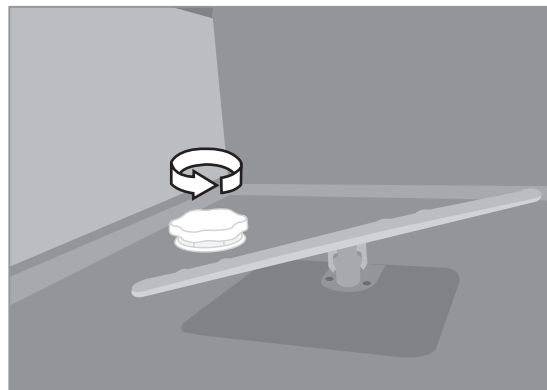
Water Softener/Detergent Level/Door Status



Enter

Back

## Refilling the Water Softener Salt Reservoir



1. Unscrew lid.
2. Fill to the top (max. 0.5 kg / 1.1 lbs.)
3. Screw lid on tightly.
4. Run a complete cycle with no instruments.

### IMPORTANT!

If the salt container is being filled for the first time, it **MUST** be filled with at least 1 litre of water before adding the salt.

Only tablet salt should be used in the softening unit. Fine grained salt such as table salt should **NOT** be used as it could clog the unit.

The water softener salt is also available from SciCan. Please contact your local dealer.

## Cleaning the Chamber

Pour 1.0L of vinegar or citric acid-based instrument neutralizer into the chamber and follow these steps:

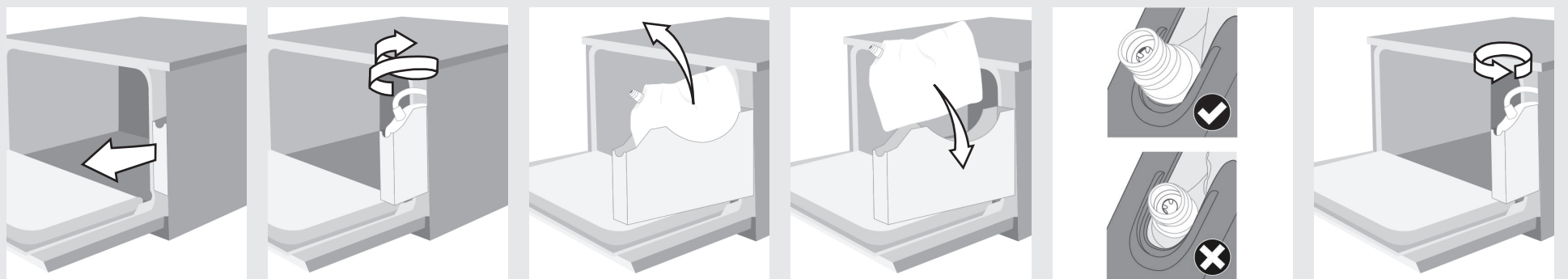


**IMPORTANT! Do a Chamber Cleaning cycle every 25 cycles. Failure to clean the chamber can promote corrosion.**

## Replacing the HIP™ Cleaning Solution

Recommended precautionary measures with regard to safe handling of HIP solution:

- Wear undamaged surgical gloves and eye protection.
- After handling the product, remove and dispose off the gloves and wash hands prior to removing eye protection.



## TROUBLESHOOTING

Refer to Operator's Manual for a more comprehensive list. Call for service if suggested recommendations do not resolve the error message.

<b>CF2 Chamber filling failure</b>	Check that the water hoses are not kinked.
	Check that water shut-off valves are opened.
	Call for Service.
<b>CF23 Top wash arm low RPM</b> Top wash arm speed too low.	Check for obstructions to rotation of top wash arm.
	Check that holes in wash arms are not plugged.
<b>CF24 Bottom wash arm low RPM</b> Bottom wash arm speed too low.	Check for obstructions to rotation of bottom wash arm.
	Check that holes in wash arms are not plugged.

### Spare Parts and Accessories

<b>CS-HIPC-U</b>	HIP- Ultra Cleaning Solution (8 x 750 mL)
<b>01-112594S</b>	Water Softener Salt
<b>01-108305S</b>	Water Test Kits
<b>01-114390S</b>	HEPA Filters



Terminal sterilization of instruments **MUST** follow processing in the HYDRIM C61W G4.