

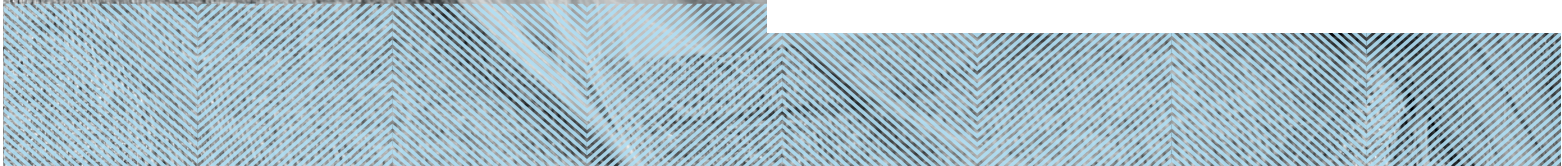


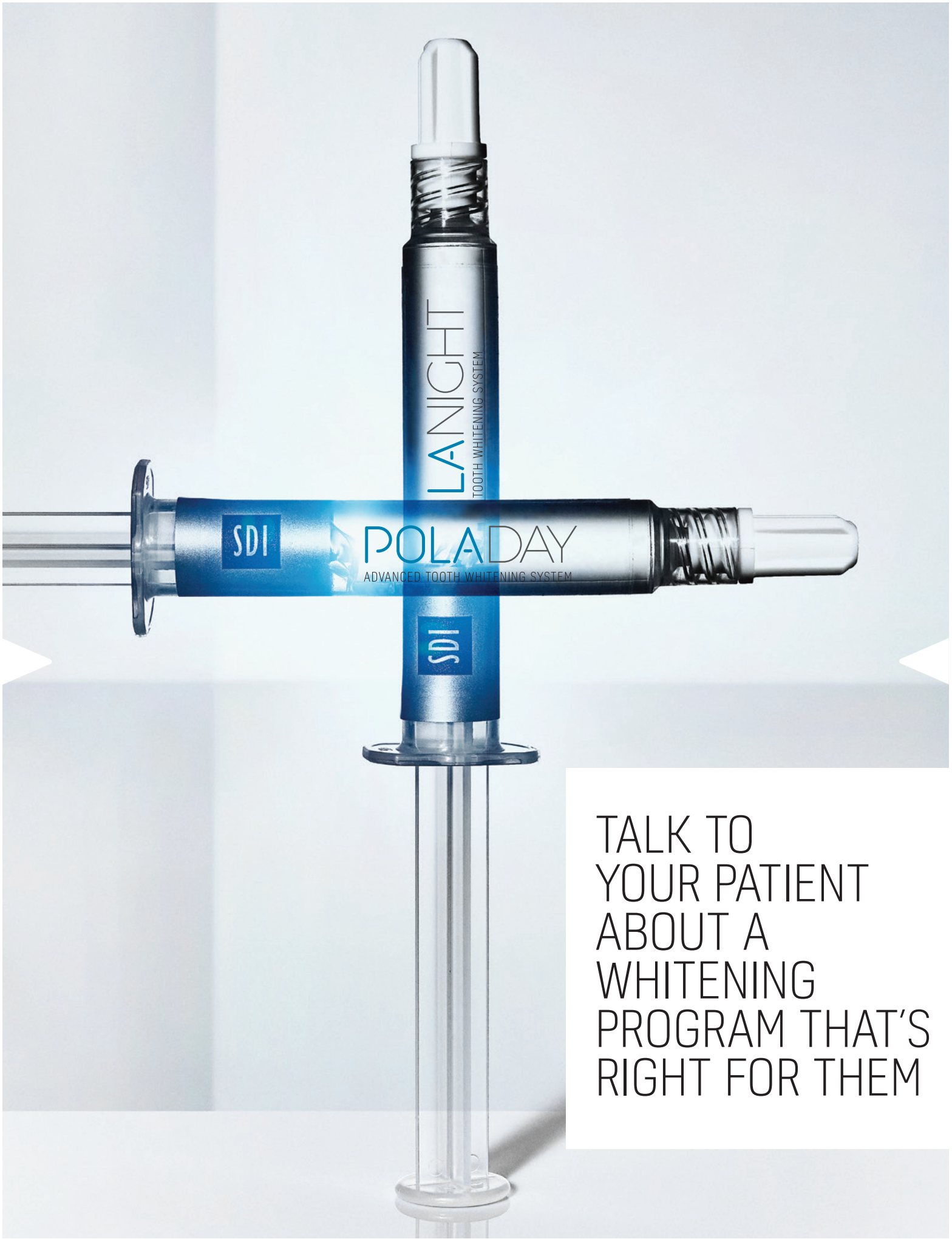
CREATED BY SDI

**POLA**

ADVANCED TOOTH  
WHITENING SYSTEM

YOUR SMILE  
CATALOG





TALK TO  
YOUR PATIENT  
ABOUT A  
WHITENING  
PROGRAM THAT'S  
RIGHT FOR THEM

# IN-OFFICE TREATMENTS

Pola Rapid	38% hydrogen peroxide	3 x 8 minute application
Pola Office+	37.5% hydrogen peroxide	3 x 8 minute application
Pola Office	35% hydrogen peroxide	3 x 8 minute application



# AT HOME TREATMENTS

## Pola Day

7.5% hydrogen peroxide	1 or 2 x 30 minute applications or 1 x 45 minute application per day
9.5% hydrogen peroxide	2 x 15 minute applications or 1 x 30 minute application per day



## Pola Night

Note: 1% of hydrogen peroxide equates to 3% of carbamide peroxide

10% carbamide peroxide	1 x 2 hours to overnight
16% carbamide peroxide	90 minutes per day to overnight
22% carbamide peroxide	1 x 45 minutes per day



## Pola Day CP

35% carbamide peroxide	15 minutes wear time at home or 30 minutes for jump start in dental office
------------------------	---



## Pola For Aligners

10% carbamide peroxide	1 x 2 hours / day to overnight
35% carbamide peroxide	1 x 15 minute applications or 1 x 30 minutes a day



## Pola Light

Pola Day 9.5% hydrogen peroxide	2 x 10 minute treatments a day
Pola Night 22% carbamide peroxide	2 x 15 minute treatments a day



# ON THE GO

## Pola Luminate

6% hydrogen peroxide	2 x 30 minute applications per day
----------------------	------------------------------------



# POLA OFFICE

# POLA OFFICE+

## IN-OFFICE TREATMENTS

### **Pola Office / Pola Office+**

Pola Office+, with its 37.5% hydrogen peroxide formulation is designed to whiten teeth in less than 30 minutes.

**Indications:** Whitening of discolored vital and non-vital teeth.

### **Minimal chair time and built in desensitizer**

With its neutral pH to protect your patient's teeth and gum, the unique formulation releases the active ingredients immediately to initiate the whitening treatment.

Pola Office+ is designed to protect sensitive dental nerves and nerve endings with Pola Desensitizing Technology (PDT) which ensures that the whitening only acts on teeth, minimizing irritation, burning, pain or long-term gum damage.



## POLA RAPID STEP BY STEP GUIDE

1. Determine and record pre-operative shade using the Vita\* shade guide.
2. Clean teeth with ONLY a flour-based pumice.
3. Place cheek retractors and then cover exposed lip surface with petroleum gel.
4. Dry teeth and apply Gingival Barrier to both arches, slightly overlapping enamel and interproximal spaces.
5. Light cure in a fanning motion for 10-20 seconds until Gingival Barrier is cured.
6. **Firmly** attach a mixing nozzle to the Pola Rapid syringe away from patient, and insert the plunger. Dispense a small amount of gel onto a mixing pad until a uniform blue gel is extruded.
7. Using the nozzle as a guide, directly apply a thin layer of gel to all teeth undergoing treatment. A thin layer will help prevent the gel from running.
8. Leave gel on for 8 minutes (Optional: A curing light may be used at this stage, Radium Xpert or Radium Plus (SDI Limited)).
9. Suction off using a surgical aspirator tip. Note: It is normal for a residue layer of gel to remain on the surface of the teeth.
10. Complete steps 7-9 three times (optional 4 times).
11. After the last application, suction all the gel off, then wash and apply suction.
12. Remove Gingival Barrier by lifting it from one end.
13. Record the final shade.



Image source: Dr Miles Cone, USA.

# POLA RAPID

SUPER.  
FAST.  
WHITENING.



Pola Rapid is the new in-office whitening treatment that safely whitens teeth in a 24 minute application time.

A unique 38% hydrogen peroxide formulation that releases active ingredients immediately.

In only one visit, Pola Rapid initiates a powerful whitening treatment designed to whiten teeth in 24 minutes.

### Enhanced blue gel for faster application

Pola Rapid uses an advanced blue gel for ease of visibility and application. The easy to apply, non-stick gel enables faster application and removal.

### Simple delivery and precise application

No mixing is required. The dual barrel syringe system mixes as the gel is applied directly onto the tooth. The supplied brush tip helps deliver a smoother and more precise application.

### Built in desensitizers

Pola Rapid has unique built-in desensitizing properties that inhibit post-operative sensitivity. Potassium nitrate, the key pain reducing ingredient, prevents sensitivity to provide a calming effect. The high water content of Pola Rapid ensures maximum comfort during and after

treatment. The shorter treatment time results in less patient discomfort and lower sensitivity.

### Fluoride releasing to strengthen teeth

Pola Rapid contains fluoride, helping to strengthen teeth and protect against sensitivity.

### Can be used with or without a bleaching light

Pola Rapid can be used with or without a bleaching light, as it does not require heat to activate.



## CLINICAL CASE STUDY



### Dr. Miles Cone

Fellow  
American College of Prosthodontists  
Diplomate  
American Board of Prosthodontics  
Nuance Dental Specialist  
Portland, Maine, USA

### Pola Rapid 38%

"Pola Rapid has exceptional color saturation for enhanced visibility during intraoral application. The new non-stick bleaching gel stays where you apply it, and easily wipes away clean with no mess. I found the new system fast, reliable to use with minimal sensitivity for patients"



# POLA DAY

# POLA NIGHT

# POLA DAY CP

# POLA FOR ALIGNERS



## AT HOME TREATMENTS

### Fluoride releasing

Pola Day and Pola Night both contain fluoride, which helps strengthen the tooth to protect it against sensitivity.

### Safe and convenient

Pola Day and Pola Night's unique high water content formulation has a neutral pH to protect gums and teeth during treatment.

### Effective whitening

The desired whitening effect can be achieved in as little as 15 minutes or can be conveniently applied overnight while you sleep.

### Pola Desensitizing Technology (PDT)

Pola Day and Pola Night contain PDT to assist with the prevention of post treatment sensitivity.

### What's the difference between Pola Day and Pola Night?

Pola Day consists of a range of hydrogen peroxide based take home gels specifically designed for achieving whitening results for patients with limited time in their schedule.

Pola Night is a range of carbamide peroxide based take home gels that deliver optimum whitening results to patients who have more sensitive teeth.

Both ranges are available in a variety of different strengths with the lower concentrations geared towards more sensitive teeth.

### Pola Day CP

Pola Day CP is the super-fast take home whitening gel which only to be worn just 15 minutes each day. It is designed for those people who need to jump start their tooth whitening in a short space of time.

### Pola For Aligners

Pola whitening gel for aligners is perfectly formulated for use with orthodontic aligner trays. Pola For Aligners can easily be used in-office or as a take home kit, ensuring a great patient experience by providing whiter, brighter smiles with no additional wear time.

Available in Pola Night 10% and Pola Day CP 35% gel offering treatment flexibility for day or night wear.

# POLA LUMINATE

Recharge the brightness with Pola Luminate! With 6% hydrogen peroxide, Pola Luminate is our highest strength brush on tooth whitener. It is designed to easily fit into your patient's pocket or bag to be used on the go! This is a great touch up tool to maintain an already white smile.



## STEP BY STEP GUIDE

1. Place a small drop of gel into every compartment of the tray for the teeth undergoing treatment.
2. Seat the tray, with the gel, around the teeth.
3. Wipe away excess gel in mouth with a tissue or dry soft brush.
4. After treatment, remove tray. Rinse tray and mouth with lukewarm water.
5. Brush teeth.



# POLA LIGHT

## A NEW ADVANCED TAKE HOME TOOTH WHITENING SYSTEM WITH LED LIGHT TECHNOLOGY



### Enjoy a Brighter, more confident smile In 5 Days

Pola Light is an advanced tooth whitening system that combines Pola's award-winning whitening formula, with an LED mouthpiece, for a faster whitening treatment.

- The Pola Light system combines with Pola Day and Night gel.
- Fast acting, delivering whiter teeth in as little as 5 days.
- Formulated to safely remove long term stains.
- Fully rechargeable for future tooth whitening treatments.
- Remineralization to strengthen the teeth.
- Extra hydration to minimize sensitivity.



FROM JUST  
20 MINUTES  
A DAY

2 x 10 or 2 x 15 minute  
treatments a day.



EASY TO USE

Portable, rechargeable and easy to wear with no cord attached to mouthpiece.

Pola LED mouthpiece is a dual arch and a universal size.



WHITER  
TEETH IN  
FIVE DAYS

5 day treatment time.  
No chair time or custom trays  
required, saving time for both  
patient and dentist.



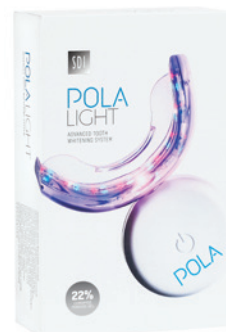
PROFESSIONALLY  
USED AND  
RECOMMENDED

Pola is a professional tooth whitening system that is trusted and recommended by dentists to achieve a safer, quicker and whiter smile.

The high viscosity, neutral pH tooth whitening gels ensure the greatest patient comfort in a take home kit. The unique blend of soothers, conditioners and high water content assist in reducing sensitivity.

## POLA LIGHT PACKAGING

- 1 x Pola LED mouthpiece
- 4 x 3g tooth whitening syringes  
Pola Day 9.5% hydrogen peroxide or  
Pola Night 22% carbamide peroxide
- 1 x USB charging cord
- 1 x Instruction guide



# FAQ

## What causes tooth discoloration?

Everyone's teeth are unique, therefore they discolor and stain in different ways. The discoloration or staining of a person's tooth is typically caused by coffee, black tea, herbal tea, red wine, spicy foods such as curry and smoking cigarettes.

## How does tooth whitening work?

When a whitening product is applied to the tooth, it breaks down into water and oxygen ions. The oxygen ions enter the enamel and attack the long stain molecules to effectively break them down to be short and colorless. These short and colorless molecules are then naturally removed from the tooth by saliva. The intensity of whitening is related to the number of ions available and the length of time they are on the tooth.



## How long does it take to whiten a patient's teeth?

With In Clinic whitening, results are obtained in just 30 minutes treatment time. Using a take home whitening system, it can take approximately 5-14 days.

## How long will the whitening treatment last?

This depends on each individual person and their oral habits. Whitening should be repeated every 6-12 months for both In-Office and Take-Home treatments. Without a touch up, your patients teeth will start to re-stain by the same thing that caused them to discolor initially.

## How long does the treatment take?

With Pola Office+, the total treatment time will take less than 30 minutes ensuring you instant gratification. Pola Day and Pola Night take between 5-14 days. With either option, your patient can achieve a whiter, younger looking smile.

## What if the patient has restorations or veneers, will these change color?

Whitening will remove any existing stains on the restorations but will not affect the original shade.

## Are there any side effects?

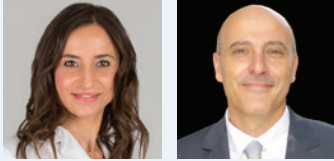
For those who follow the Instructions for Use that come with the Pola products, the majority will have no side effects. However, some will experience temporary sensitivity (dull or sharp, sensitive to hot or cold). This will subside after several hours of stopping the treatment and won't leave any residual problems. The wear times can be shortened or made less frequent or teeth can be treated with a desensitizer, soothe. The patient should abstain from carbonated drinks, citrus fruits and beverages to avoid sensitivity.

## Is teeth whitening safe during pregnancy?

It is not recommended to use teeth whitening products during pregnancy.



# CLINICAL CASE STUDIES



Dr. Marta Peydro Herrero  
Dr. José Amengual Lorenzo

POLA OFFICE+  
POLA NIGHT

## **Pola Office+ 37.5%** followed by 5 weeks **Pola Night 16%**

The whitening products that make up the Pola tooth whitening system, allow me to solve most of the dental discolorations that we can face in daily clinical practice in a simple way, but, above all, safe for the patient. Whether it is an in-office treatment, take home or combined, we achieve a white smile, satisfying the expectations of our patients.



Prof. Leandro Martins

POLA NIGHT

## **Pola Night 10%**

One of the biggest problems of dental whitening is tooth sensitivity. Therefore, finding products that bring greater safety is the key. With low concentration carbamide peroxide, Pola Night bleach has high water content, neutral pH, desensitizers and high viscosity. These characteristics responds to the patient's demand for an effective result with protection against sensitivity and gingival irritation. Therefore, the choice for Pola Night 10% is due to its characteristics of a convenient, safe and effective product.



Dr. Michael Chan

POLA OFFICE+

## **Pola Office+ 37.5%**

The Pola family of whitening products offers great flexibility to patients. The chairside Pola Office products have a nice consistency that allows for greater clinical control. I have found the system reliable to use and minimal hypersensitivity for patients



# POLA IN-OFFICE

## Pola Rapid 3 patient kit

7700500 Pola Rapid 3 Pat Kt  
7700501 Pola Rapid  
3 Pat Op Gate Kt  
3 x 2.8 mL syringes of Pola Rapid  
3 x 1g Gingival Barrier syringe  
Accessories



## Pola Rapid 1 patient kit

7700502 Pola Rapid 1 Pat Kt  
7700503 Pola Rapid  
1 Pat Op Gate Kt  
1 x 2.8 mL syringe of Pola Rapid  
1 x 1g Gingival Barrier syringe  
Accessories



## Pola Office+ 3 Patient Kit

7700415 (no Optragate®)  
7700416 (with 3 x Optragate®)  
3 X 2.8 mL syringes of Pola Office+  
3 X 1g Gingival Barrier syringes  
Accessories



## Pola Office+ 10 Syringe Bulk Kit

7700457 (no Optragate®)  
10 X 2.8 mL syringes of  
Pola Office+  
Accessories



## Pola Office 3 Patient Kit

7700015  
6 X 0.3g Pola Office Powder Pots  
6 X 2mL Pola Office Syringes  
3 X 1g Gingival Barrier Syringes  
Accessories



## Pola Office+ 1 Patient Kit

7700430 (no Optragate®)  
7700431 (with 1 x Optragate®)  
1 X 2.8 mL syringe of Pola Office+  
1 X 1g Gingival Barrier syringe  
Accessories



## Pola Office 1 Patient Kit

7700030  
2 X 0.3g Pola Office Powder Pots  
2 X 2mL Pola Office Syringes  
1 X 1g Gingival Barrier Syringe  
Accessories



## Gingival barrier 2 Syringe Refill

7750006  
2 X 1g Gingival Barrier Syringes  
Accessories



# POLA AT HOME

## Pola Day and Pola Night 10 x 1.3g Syringe Kits

7700103 (7.5% HP)  
7700105 (9.5% HP)  
7700107 (10% CP)  
7700109 (16% CP)  
7700111 (22% CP)



## Pola Day and Pola Night 4 x 1.3g Mini Kits

7700102 (7.5% HP)  
7700104 (9.5% HP)  
7700106 (10% CP)  
7700108 (16% CP)  
7700110 (22% CP)  
7700324 (35% CP)



## Pola Day and Pola Night 50 x 3g Dispenser Kit

7700070 (7.5% HP)  
7700071 (9.5% HP)  
7700072 (16% CP)  
7700080 (22% CP)  
7700073 (35% CP)



## Pola Day and Pola Night 50 x 1.3g Bulk Kit

7700026 (7.5% HP)  
7700034 (9.5% HP)  
7700027 (10% CP)  
7700028 (16% CP)  
7700029 (22% CP)  
7700325 (35% CP)



## Pola Day and Pola Night 36 x 3g Value Packs

7700061 (9.5% HP)  
7700062 (16% CP)



## Soothe

8150002  
4 X 1.2mL Soothe Syringes  
8150034  
50 X 1.2mL Soothe Syringes



## Spacer Resin 2 Syringe Refill

7700012  
2 X 1g Spacer  
Resin Syringes

## Cosmetic Pola Pouches: 10 Pack

7700999  
10 Pouches

## Pola For Aligners Pola Night and Pola Day CP

4 x 1.3g syringes 7700552 (10% CP)  
4 x 1.3g syringes 7700553 (35% CP)  
4 x 3g syringes 7700550 (10% CP)



## Pola Light

7700983 (9.5% HP)  
7700984 (22% CP)



## Tray Cases: 5 Pack

7750008  
5 Tray Cases

## Tray Material: 20 Pieces

7750005  
20 Piece Refill

# POLA ON THE GO

## Pola Luminare

7700092  
1 X 5.5mL Pola Luminare



**Please note:** each pack includes accessories.  
**CP:** Carbamide Peroxide **HP:** Hydrogen Peroxide

^Optragate® is not a registered trademark of SDI

# FREE MARKETING MATERIAL

MARKETING MATERIAL TO ASSIST IN PROMOTING WHITENING TO PATIENTS.



POSTER POLA DAY  
Reorder M100274



POSTER POLA NIGHT  
Reorder M100275



POSTER POLA OFFICE+  
Reorder M100276



MISS USA POSTER  
Reorder M100456



MISS USA COUNTER  
CARD  
Reorder M100458



MISS USA COUNTER  
CARD ALIGNERS  
Reorder M100691



POSTER POLA LIGHT  
Reorder M100486



POLA LIGHT COUNTER  
CARD  
Reorder M100496



POLA LIGHT DENTIST  
HANDOUT  
Reorder M100509



POLA LIGHT PATIENT  
HANDOUT  
Reorder M100510



POLA BEFORE &  
AFTER STAND  
Reorder M100288



POLA PATIENT  
HANDOUT STAND  
Reorder M100290



POLA STATEMENT  
STUFFER  
Reorder M100291



POLA THANK YOU  
CARD  
Reorder M100295



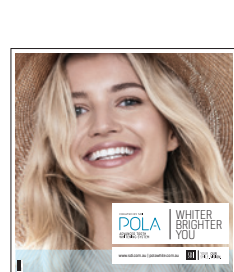
POLA PATIENT  
HANDOUTS  
Reorder M100367



POLA MENU  
Reorder M100292



POLA APPOINTMENT  
CARDS  
Reorder M100287



POLA CEILING TILE  
Reorder M100293



POLA WINDOW  
STICKER  
Reorder M100289



POLA CARRY BAG  
Reorder M100143



POLA WAITING ROOM  
USB VIDEO  
Reorder M100245



CUSTOMIZABLE  
MARKETING MATERIAL  
More customizable marketing material is available  
via download.  
Visit [www.sdi.com.au](http://www.sdi.com.au)

SDI LIMITED IS PRIMARILY INVOLVED IN THE RESEARCH AND DEVELOPMENT, MANUFACTURING AND MARKETING OF SPECIALIST DENTAL MATERIALS. SDI'S PRODUCTS ARE A COMBINATION OF INNOVATION AND EXCELLENCE TO PROVIDE THE IDEAL RESTORATIVE MATERIALS FOR THE DENTAL PROFESSION.



---

MADE IN AUSTRALIA  
by SDI Limited  
3-15 Brunsdon Street,  
Bayswater, Victoria 3153 Australia  
[www.sdi.com.au](http://www.sdi.com.au)

---

AUSTRALIA 1 800 337 003  
AUSTRIA 00800 022 55 734  
BRAZIL 0800 770 1735  
FRANCE 00800 022 55 734  
GERMANY 0800 100 5759  
ITALY 00800 022 55 734  
SPAIN 00800 022 55 734  
UNITED KINGDOM 00800 022 55 734  
USA & CANADA 1 800 228 5166

---



INSTAGRAM  
[@pola\\_smile](https://www.instagram.com/pola_smile)



FACEBOOK  
[polasmiletoothwhitening](https://www.facebook.com/polasmiletoothwhitening)

---

FOR MORE INFORMATION VISIT  
[polawhite.com.au](http://polawhite.com.au)

